

## Aprons

Stylish & practical aprons made from fine-line cotton twill, featuring 40" long ties and a banded waist.



### Bib Apron

39" wide x 35" long, with pocket.  
100% Cotton

- A148 White
- A149 Black Chalstripe
- A150 Navy Chalstripe

### Bistro Apron

34" wide x 30" long, with pocket.  
65% Poly 35% Cotton  
A146

### Chef's Apron

30" wide x 34" long, no pocket. 100% Cotton  
A145

### Extra Long Bistro Apron

30" wide x 38" long, no pocket.  
100% Cotton  
A147



### Oven Mitts

Heat resistant, flame retardant & lined. Cotton.

- A160 Regular, 13"
- A161 Long, 17"



### Silicone Oven Mitt

Flexible, waterproof, three-finger mitt made from silicone. Withstands temperatures from zero to 550 ° F. Has the feel of a cloth mitt with the benefits of silicone.

A165



### Baker's Cap (Skull Cap)

All cotton with elastic. One size fits all. 3½" high.

- A104-W White
- A104-B Black



### MATFER Brand Pleated European Chef's Hats

Durable yet elegant. 100% non-woven, vegetable fabric is comfortable, absorbent and non-irritating. Adjusts to any size.

Sold in packs of 10 hats. 8¾" high  
A107-8.75

## Chefwear Pants

100% cotton fabric.

### a. **Traditional Pants**

Classic straight cut, 2" elastic waist band with drawstring, zipper front and three pockets.

- A170 houndstooth
- A171 chalkstripe
- A172 indigo
- A173 plain black

### b. **Ultimate Pants**

Fuller than "Traditional" pants. 2" waistband and four pockets.

- A142 charcoal
- A201 black
- A202 chalkstripe

### c. **Cargo Pants**

Same cut as "Ultimate" but with 2 extra pockets (total 6). 2" waist band.

- A176 black
- A177 houndstooth



a

b

c

a

## Size Chart

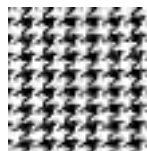
	WAIST	INSEAM
Extra Small - XS	24-26	30
Small - S	28-30	31
Medium - M	32-34	32
Large - L	36-38	33
Extra Large - XL	40-42	34
Extra, Extra Large - XX	44-46	33.5

## To order:

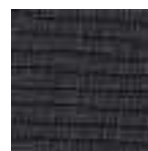
Add XS, S, M, L, XL, or XX to product number



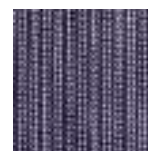
Chalkstripe



Houndstooth



Charcoal



Indigo



Black

### **Cuisinier Jacket from CHEF REVIVAL**

The distinctive cut and good value have made this jacket very popular.

- 100% cotton
- drop shoulder cut for extra comfort,
- shoulder pocket,
- fabric covered buttons,
- military style collar and fold back cuffs.

White

- A190-S Sizes 36-38
- A190-R Sizes 40-42
- A190-L Sizes 44-46
- A190-XL Sizes 48-50

Black

- A191-S Sizes 36-38
- A191-R Sizes 40-42
- A191-L Sizes 44-46
- A191-XL Sizes 48-50

