

JB Prince

A close-up photograph of a JB Prince thermal circulator. The device is a rectangular metal tank with a black control panel on the right side. The tank is filled with water, and a layer of steam is visible at the surface. At the bottom of the tank, several brown eggs are submerged. The background is a plain, light-colored wall.

Summer 2011

Thermal Circulator
Page 30

Utensils

Chef Gray Kunz Sauce Spoons

The perfect sizes for saucing plates. Heavy stainless steel.



Chef Gray Kunz Sauce Spoons

a. 9" overall. 2.5" tablespoons.

U715 \$9.90

b. 7.5" overall. 1.3" tablespoons.

U716 \$5.00

U719 & U718



Chef Gray Kunz Perforated Spoons

c. 7.5" overall. 1.3" tablespoons

U719 \$9.40

d. 9" overall. 2.5" tablespoons

U718 \$12.80



Alma Test Tasting Tool

The Alma tasting tool is a clever utensil that can be used for tasting and plating. It offers the convenience of a spoon and tweezer and can be stored in your apron or in the sleeve pocket of your chef coat, so it is always at the ready. 5.5" L.

U937 \$13.90



Tapered Fine Tip Squeeze Bottles

e. Holds 1.5 oz., 4.9" h.

X407-1.5 \$1.50

h. Holds 8 oz., 7.2" h.

X407-8 \$2.80

f. Holds 3 oz., 5.5" h.

X407-3 \$1.60

i. Holds 16 oz., 8.9" h.

X407-16 \$4.20

g. Holds 6.5 oz., 6.7" h.

X407-6.5 \$2.40

Fine Tip Stainless Steel Tweezers

Excellent for plating and handling delicate ingredients. Powder-Coat finish.



6.25" L. Straight.
U924-A \$8.10



6.5" L. Off set.
U924-B \$9.90



6.25" L. Curved tip.
U924-C \$7.90



Plating Tongs ("Giant Tweezer")

Long, thin tips for careful lifting, turning, etc. Stainless steel. 10" L.

U675 \$6.90

Stackable Stainless Steel Press

Great for grilling meat, fish, vegetables and more. Our stainless-steel presses top foods with extra weight for faster, more efficient cooking.

- Vented to release moisture during grilling.
- Presses can be stacked to create extra weight.
- Easy to arrange in overlapping patterns to cover larger pieces of meat.
- Also handy for weighting foods for marinating.
- Dishwasher safe.
- Measures 5" L x 4" w.

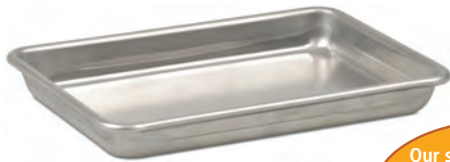
9 oz. 13 oz.
U956-9 **U956-13**
\$7.00 **\$9.00**



Stack them to create extra weight...

...Or arrange in overlapping patterns to cover larger pieces of meat.

New additions!



Our smallest sheet pan size

1/8 Sheet Pan

Aluminum sheet pan. 9.5" L x 6.5" w x 1" h.

M652 \$7.50



Cast Iron Square Plancha/Griddle

This cast iron griddle is a convenient way to make an existing gas burner or section of a grill into a small plancha. It has 14" square cooking surface, high back, and oversized handles for easier handling.

S385 \$68.50

Electric Pilot Igniter

Unlike traditional butane lighters, the Spark E* Piezoelectric Gas Igniter requires no fuel or flint to operate, so there's no dangerous flame. Everything's clean, durable and recyclable. Just one AA battery provides a continuous spark, perfect for stove tops, pilots, barbecues, boilers, gas fireplaces, and much more.

Specifications: Electronic piezoelectric gas igniter. Single AA battery.

Materials: Durable ABS plastic, shock resistant, nickel plated steel tip.

Voltage: Discharge 7/8 KV, power .25 W, 10 sparks per cycle.

Size: 9" L x 1.25" w.

Weight: 0.21 Lb.

U952 \$20.25



Mini Legumier

Perfect for individual servings, side dishes and soups, this covered mini ceramic piece was designed after the cast iron Legumier. With sure-grip handles and rounded corners for confident, comfortable use. The non-porous construction it resists odors, chipping, cracking, and staining. Flame color. 16 oz. Stoneware. 5" d x 2" h.

R862 \$19.70



Pate Terrine with Press

The Pate Terrine features vertical sides and a tightly fitting lid, with an included Stoneware press for compacting a terrine. The pressure eliminates air pockets that can ruin a terrine's texture. In order to improve form and texture before removing and slicing, the removable press is applied directly on top of finished pate. This pressure helps the fat set properly during cooling, which can range from a few hours to overnight. Extra weight can be easily added for heavier meat terrines and pate. Flame color. 32 oz. Stoneware. 4" w x 6" L x 3.7" h.

R863 \$31.50

Cutlery

Wusthof Pro

New!

Wusthof introduces a new affordable, high quality line of stamped cutlery geared towards professional chefs. The PRO series is built for the tough demands of the commercial kitchen. The blades are made of high carbon stainless steel and fixed to ergonomic soft poly, slip-resistant handles. Wusthof has stayed true to their roots and continues to make this product in Germany.



Serrated Bread Knife 10" L.
W532 \$29.95



Flexible Filet Knife 8" L.
W536 \$21.95



Serrated Offset Knife 9" L.
W533 \$29.95



Stiff Boning Knife 6" L.
W535 \$19.95



Paring Knife 3.5" L.
W531 \$5.95



Chef's Knife 10" L.
W534-10 \$33.95



Turning Knife 2.5" L.
W530 \$5.95



Chef's Knife 8" L.
W534-8 \$29.95

Masahiro

High Carbon, Stain Resistant Steel Masahiro knives are amazingly light weight, yet perfectly balanced. These handles have a three rivet design and are made of a composite plastic. They are remarkably durable, much more practical and longer lasting than a laminated wood handles. The composite handle is resistant to bacteria which keeps the knife very hygienic in daily use. All of these knives feature stainless steel and plastic handle.

Warning: these extremely thin blades are for fine, precise slicing, NOT for breaking bones or rough work.



Chef's Knife
9.5" blade L. 8" blade L.
Y671-240 \$159.00 Y671-210 \$95.50



Santoku Knife
7" blade L.
Y672-175 \$89.40



Hollow Ground Slicer
9.5" blade L.
Y673-240 \$236.00

Carbon Steel Masahiro, one of Japan's largest cutlery companies, makes these superb Western-style, professional knives. Carbon steel gives the world's sharpest edge. The blades are super thin for fine slicing and are sharpened on both sides. The handles are made of high density fiberboard for moisture resistance, and are stainless steel riveted to the full tang.



Chef's Knives

7" blade L. 8" blade L. 9.5" blade L.
Y602-7 \$99.90 Y602-8 \$122.00 Y602-9.5 \$147.00



Thin Blade Slicers

9.5" blade L. 10.5" blade L.
Y605-9.5 \$155.00 Y605-10.5 \$182.00



Japanese Boning Knife

6" blade L.
Y603 \$121.00



Santoku Knife

7" blade L.
Y604 \$144.00



Paring Knife

4.7" blade L.
Y600 \$69.40

Note: These blades are made from carbon steel. They are not stain resistant.



Utility Knife

6" blade L.
Y601 \$79.80

— Stain Resistant Blades Made From Molybdenum Vanadium Steel —



Thin Blade Slicers

9.5" blade L. 10.5" blade L.
Y660-9.5 \$173.00 Y660-10.5 \$199.00



Chef's Knives

7" blade L. 8" blade L. 9.5" blade L.
Y652-7 \$133.00 Y652-8 \$146.00 Y652-9.5 \$173.00



Santoku Knife

7" blade L.
Y661 \$115.00



Paring Knife

4.7" blade L.
Y650 \$69.90



Japanese Boning Knife

6" blade L.
Y662 \$145.00



Utility Knife

6" blade L.
Y651 \$78.80

Misono

The Misono Company is descended from one of Japan's great sword makers. While still producing ceremonial swords, Misono is now more famous for their excellent, thin blade cutlery, the finest in Japan. You can select from four of their best lines, each with different design, blade or bolster features. All the Misonos have the same handles made from natural wood for comfort and feel. They are impregnated with resin under high pressure and great heat to make them very durable and impervious to water.

Highest Quality Swedish Carbon Tool Steel Misono's original knife line is made from Swedish, high carbon tool steel. Believed by many to be the finest for cutlery because of its unique molecular structure, the blades are hot-forged, hardened and tempered to Rockwell 60°. Blades are sharpened on both sides (Western style) with a standard bolster.

Warning: these extremely thin blades are for fine, precise slicing, NOT for breaking bones or rough work.



Chef's Knives

8" blade L. 9.5" blade L.
Y701-8 \$99.00 Y701-9.5 \$159.00



Thin Blade Knives

9.5" blade L. 10.5" blade L.
Y702-9.5 \$149.00 Y702-10.5 \$193.00

Note: These blades are made from carbon steel. They are not stain resistant.



Paring Knife

4.7" blade L.
Y700 \$55.90

Stain Resistant Blades Made From Molybdenum, Vanadium Steel Using the same thin-blade construction, these knives are made of a high carbon, chrome-molybdenum steel that insures good edge quality while resisting stain and rust. The metal is ice-hardened and tempered to Rockwell 58° and sharpened on both sides (western style). Standard bolster.



Santoku Knives

Light, thin blades, 7" blade L.

Regular edge.
Y722 **\$99.20**

Hollow Ground.
Y723 **\$142.00**



Narrow Blade Slicers

9.5" blade L.
Y706-9.5 **\$134.00**

10.5" blade L.
Y706-10.5 **\$164.00**



Chef's Knives

8" blade L. 9.5" blade L.
Y705-8 **\$93.80** Y705-9.5 **\$129.00**



Chopping Knife

Heavy, thick blade. 6.5" blade L.
Y711 **\$123.00**



Hollow Ground Chef's Knives

9.5" blade L. 10.5" blade L.
Y712-9.5 **\$181.00** Y712-10.5 **\$195.00**



Japanese Boning Knife

6" blade L.
Y710 **\$90.40**

Misono's Stain Resistant 440 Series This steel has more chrome which makes it harder and allows a sharper edge but with good re-sharpening properties. Ice hardened and tempered to Rockwell 60° for strength and durability. Standard bolster. **Note: These blades are made from stain resistant steel.**



Chef's Knife

8" blade L. 9.5" blade L.
Y735-8 **\$139.00** Y735-9.5 **\$189.00**



Thin Blade Slicer

9.5" blade L.
Y736-9.5 **\$169.00**

UX-10 Series Top grade Swedish, high carbon, no-stain steel makes hard, sharp cutting edges with surprisingly easy resharpening. Ice hardened (sub zero) and tempered to Rockwell 60° for great strength and edge retention. Unique tapered, German silver bolster allows greater comfort and less irritation from the back of the blade.



Hollow Ground Chef's Slicer

9.5" blade L. 11" blade L.
Y742-9.5 **\$229.00** Y742-11 **\$299.00**



Chef's Knife

8" blade L. 9.5" blade L.
Y730-8 **\$199.00** Y730-9.5 **265.00**



Hollow Ground Chef's Knife

8" blade L. 9.5" blade L.
Y741-8 **\$249.00** Y741-9.5 **\$337.00**



Santoku Knife

7" blade L.
Y732 **\$199.00**



Thin Blade Slicer

9.5" blade L.
Y731-9.5 **\$247.00**



Hollow Ground Paring Knife

4.7" blade L. 10.5" Hollow Ground blade L.
Y740 **\$215.00** Y707-10.5 **\$266.00**

Chef Pak Backpack*

The ultimate, all-in-one backpack for chefs.

- Back pocket is custom built for nine pocket knife case (included. Also sold separately).
- Laptop pocket with maximum screen size of 17".
- Middle pocket is large enough to hold books and/or uniforms.
- Designated area with pockets for your cooking utensils.
- Front utility pocket with room for first aid kit, wallet, keys, pens, etc.
- Padded straps and back panel for extra comfort.

Bulleated nylon, nylon. Weight: 3.1lbs (1.4 kg). 19" h x 13" w x 8.5" d.

Z215 \$98.00

New style!

Chef Pak 14 Pocket Knife Case

Nylon. 11.5" h x 18.5" L.

Z216 \$39.00



*Cutlery for illustration purposes, not included.

Nylon & Polyhide These cases and rolls are made from either a woven nylon fabric that looks like canvas or from a textured soft vinyl, "Polyhide" that looks and feels like leather.



3 Pocket Roll*

Woven Nylon with Velcro Straps. 19" L x 13" w.

Z161 \$19.40



12 Pocket Roll*

Reinforced double handles. Holds 12 tools up to 18" L. Closed measures 20" L x 8" w.

Woven nylon.

M817 \$32.50

Polyhide with zippered compartment inside.

M818 \$35.20



8 Pocket Roll*

Velcro straps adjust to make a compact tool roll. 7 pockets hold tools up to 18" L. Closed measures 20" L x 6" w.

Woven nylon.

M819 \$19.70

Polyhide with zippered compartment inside.

M820 \$26.30



17 Pocket Box*

Plastic clasps. Folds to 20" L x 8.5" w x 3" h. Woven nylon.

M814 \$46.40

*Cases and rolls are shown with cutlery for illustration purposes only. Cutlery is not included.

Visit us online at www.jbprince.com for our complete selection of Knife & Tool Carriers

Flexible Molds

- Non-stick surfaces mean you never need to grease molds!
- Easy to clean...just rinse and wipe dry. No rust ever!
- NSF approved.

- Full sheet: 23" L x 15" w.
- Half sheet: 15" L x 11.25" w.

Flexipans

Flexipan Molds surfaces are as smooth as glass and permanently treated with non-stick silicone - baked items pop right out of the mold. No scraping! Frozen or gel foods are pushed out from the bottom without extractor! These molds are so flexible you can actually turn them inside out without causing damage. Withstands temperatures -40° to 536° F. Full sheet Flexipans are **\$93.70**. Half sheet Flexipans are **\$61.90**.



Small Muffins

40 forms. 2" d x 1.2" h. Holds 1.5 oz.
M370-J

Small Muffin Half Sheet

20 forms. 2" d x 1.2" h. Holds 1.5 oz.
M373-J

Regular Muffins

24 forms. 2.75" d x 1.2" h. Holds 4.2 oz.
M370-I

Regular Muffin Half Sheet

12 forms. 2.75" d x 1.2" h. Holds 4.2 oz.
M373-I

Tapered Muffins

24 forms. 3.3" d x 1.4" h. Holds 2.9 oz.
M370-R



Mini Ovals

64 forms. 2.3" L x 1.4" d x 0.5" h. Holds 0.6 oz.
M371-N

Small Ovals

50 forms. 2" L x 1.8" w x 0.8" d. Holds 0.7 oz.
M370-K

Regular Ovals

30 forms. 2.7" L x 1.9" w x 1.2" d. Holds 2.5 oz.
M370-S

Large Ovals

20 forms. 3.4" L x 2.4" w x 1.2" h. Holds 3.4 oz.
M372-F



Micro Hemispheres

96 forms. 1" d x 0.6" h. Holds 0.2 oz.
M371-H

Mini Half Sphere Half Sheet

35 forms. 1.2" d x 0.7" h. Holds 0.3 oz.
M373-E

Mini Hemispheres

70 forms. 1.2" d x 0.7" h. Holds 0.3 oz.
M370-E

Small Hemispheres

48 forms. 1.6" d x 0.75" h. Holds 0.7 oz.
M370-D

Medium Hemispheres

28 forms. 2" d x 1.2" h. Holds 1.7 oz.
M370-W

Regular Hemispheres

24 forms. 2.75" d x 1.6" h. Holds 3.5 oz.
M370-C

Half Spheres Half Sheet

12 forms. 2.6" d x 1.6" h. Holds 3.5 oz.
M373-C

Extra Large Half Sphere Half Sheet

12 forms. 3.2" d x 1.6" h. Holds 4.2 oz.
M373-N

Extra Large Hemispheres

24 forms. 3.2" d x 1.6" h. Holds 4.2 oz.
M370-N



Tarte Tatin

12 forms. 4" d x 1.4" h. Holds 8.3 oz.
M371-G



Upside Down Mini Hemispheres

45 forms. 1" d x 0.6" d. Holds 0.2 oz.
M375-A



Mini Square Savarin

60 forms. 1.4" L x 1.4" w x 0.6 h. Holds 1.5 oz.
M375-F

Square Savarin

24 forms. 2.7" L x 2.7" w x 1.2" h. Holds 3.4 oz.
M375-C



Timbales

40 forms. 1.6" d x 1.4" h. Holds 1.4 oz.
M372-V



Small Cylinders
48 forms. 1.6" d x 0.75" d. Holds 0.9 oz.
M372-D

Cylinders
24 forms. 2.5" d x 1.4" h. Holds 3 oz.
M370-V

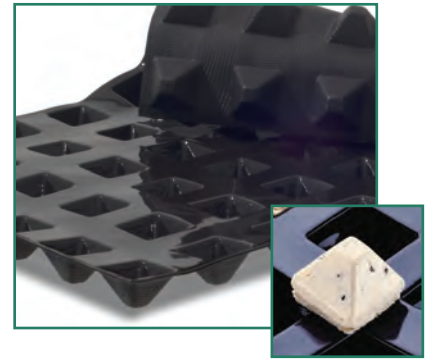
Large Cylinders
24 forms. 3.2" d x 1.2" h. Holds 5 oz.
M372-E



Mini Oval Savarins
60 forms. 1.6" L x 1.2" w x 0.5" d. Hold 0.3 oz.
M375-B

Regular Oval Savarin
30 forms. 2.75" d x 2" h. Holds 1.6 oz.
M375-T

Large Oval Savarins
24 forms. 3.2" L x 2.4" w x 1" d. Holds 2.4 oz.
M372-Q



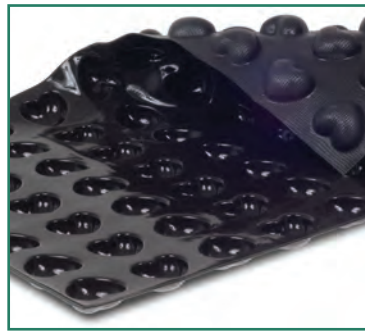
Mini Pyramids
54 forms. 1.4" L x 1.4" w x 1" d. Holds 0.5 oz.
M370-B

Pyramids Half Sheet
12 forms. 2.4" L x 2.8" w x 1.6" d. Holds 3 oz.
M373-A

Pyramids
24 forms. 2.8" L x 2.8" w x 1.6" d. Holds 3 oz.
M370-A



Hearts
20 forms. 2.6" L x 2.4" w x 1" d. Holds 1.8 oz.
M372-G



Mini Hearts
70 forms. 1.6" L x 1.5" w x 0.6" d. Holds 0.5 oz.
M375-H



Eggs
42 forms. 2.4" L x 1.6" w x 1" d. Holds 1 oz.
M372-N



Mini Quenelle
100 forms. 1.6" L x 0.75" w x 0.6 d. Holds 0.2 oz.
M375-G

Quenelles
72 forms. 1.6" L x 1" w x 0.75 d. Holds 1.9 oz.
M371-M



Round Flan
24 forms. 3.2" d x 0.8" h. Holds 2.4 oz.
M372-U



Rectangular Cakes
24 forms. 3.1" L x 1.2" w x 1.2" d. Holds 1.9 oz.
M370-U

Large Rectangle Cakes
21 forms. 4" L x 2" w x 1.2" d. Holds 4 oz.
M372-J

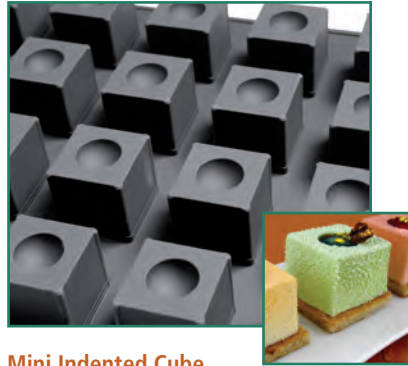
Pavoflex Silicone Molds

A line of flexible non-stick silicone molds with contemporary and innovative shapes for both sweet and savory applications. They can be used in a temperature range of -40° F to 536° F (-40° C to 280° C) and have been designed to accommodate the maximum number of forms per sheet. Overall dimensions for each sheet are: 23.5" L x 15.75" w. **\$94.40.**



Mini Spiral
54 forms. 1.6" d x 1.2" h. Holds 0.9 oz.
M621-C

Spiral Tower
24 forms. 2.7" d x 2" h. Holds 4.4 oz.
M620-A

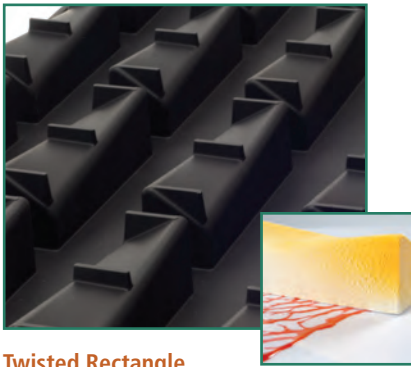


Mini Indented Cube
54 forms. 1.9" L x 1.9" w x 1.9" h. Holds 0.9 oz.
M621-B

Indented Cube
28 forms. 2" L x 2" w x 2" h. Holds 3.9 oz.
M620-B



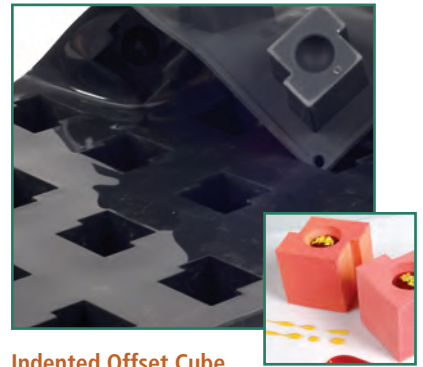
Triple Cube
20 forms. 4.7" L x 1.3" w x 1.3" h. Holds 3.9 oz.
M620-C



Twisted Rectangle
20 forms. 4.8" L x 1.3" w x 1.5" h. Holds 3.9 oz.
M620-G



Ramp
20 forms. 4.8" L x 1.2" w x 1.4" h. Holds 3.7 oz.
M620-H



Indented Offset Cube
24 forms. 2.3" L x 2" w. Holds 3.9 oz.
M620-J



Wave
25 forms. 3.1" L x 1.8" w x 1.5" h. Holds 4.4 oz.
M620-I



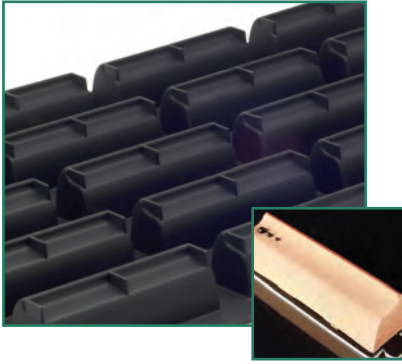
Indented Racetrack
20 forms. 5" L x 1.4" w x 1.3" h. Holds 3.4 oz.
M620-P

Mini Indented Racetrack
72 forms. 2.4" L x 0.9" w x 0.9" h. Holds 0.9 oz.
M621-K



Mini Ridged Cylinder
54 forms. 1.4" d x 1.2" h. Holds 0.9 oz.
M621-E

Ridged Cylinder
24 forms. 2.4" d x 1.8" h. Holds 3.9 oz.
M620-E



Sloped Rectangle

20 forms. 4.4" L x 1.4" w x 1.4" h. Holds 3.7 oz.
M620-N



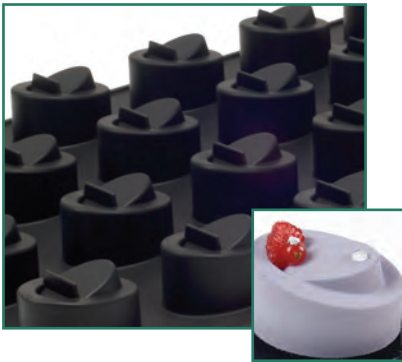
Mini Kugelhopf

24 forms. 2.8" d x 1.3" h. Holds 2.4 oz.
M621-G



Mini Slanted Cylinder

54 forms. 1.4" d x 1.4" h. Holds 0.9 oz.
M621-A



Tilted Oval

24 forms. 2.9" L x 2" w x 1.8" h. Holds 3.4 oz.
M620-K



Tapered Charlotte

24 forms. 3" d x 1.9" h. Holds 4 oz.
M620-D



Domed Pinwheel

24 forms. 2.8" d x 1.8" h. Holds 3.8 oz.
M620-L

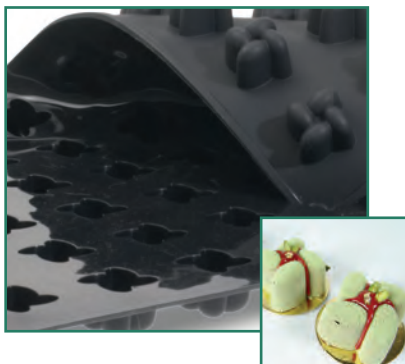
Mini Domed Pinwheel

54 forms. 1.6" d x 1" h. Holds 0.9 oz.
M621-I



Tiered Dome

24 forms. 2.8" d x 2" h. Holds 3.7 oz.
M620-M



Mini Pinwheel

54 forms. 1.5" d x 1.1" h. Holds 0.9 oz.
M621-D



Mini Ridged Cone

54 forms. 1.5" d x 1.8" h. Holds 1 oz.
M621-F

Ridged Cone

24 forms. 2.5" d x 2.8" h. Holds 4.3 oz.
M620-F

Individual Serving Pieces

These European designed, plastic serving pieces are stylish and elegant. They can be used for off-premise catering, receptions, pool-side parties, airplane or boat service, picnic baskets and more. Attractive but not expensive. Disposable or re-usable.

New additions!



Double Tasting Spoon
1" w x 4.5" overall L. Pack of 200.
R873 **\$99.50**



Sphere Container with Screw Cap
3.5" d x 3" h. Pack of 100.
R875 **\$92.40**



Mini Can Oval Aluminum Tin
1.18" h x 4.5" L x 2.75" w. Pack of 100.
R877 **\$84.80**



Glass Yogurt Pot
2.5" d x 2.5" h. Pack of 100.
R878 **\$74.40**



Mini Takeout Style Container
Base: 1.18" w x 1.18" L. Top: 2" w x 2" L.
2.35" h. Holds 3 oz. Pack of 100.
R879 **\$43.60**



Mini Burger Style Box
2.5" w x 2.5" L x 2" h Pack of 100.
R880 **\$43.60**



Round Cocotte with Lid
Plastic. 2.75" d. Microwave safe.
R882 **\$112.00**



Microwavable Paella
7" d x 0.78" h. Pack of 100. Microwave safe.
R883 **\$98.00**



Square Glasses
a. 1.5" w x 2.3" L x 1.5" h. Pack of 200.
R641 **\$64.50**
b. 1.7" w x 1.7" L x 1.7" h. Pack of 400.
R874-2 **\$110.00**
c. 2.8" w x 2.8" L x 2.5" h. Pack of 200.
R874-8 **\$93.80**



Fillable Aluminum Tube
Pack of 100.

Small (Fine Tip). Medium. Large.
R876-2 **\$58.80** R876-5 **\$64.10** R876-10 **\$69.40**

Aluminum Tube Crimping Pliers
R876-P **\$64.40**



Filling Grid for Aluminum Tube (Small & Medium)
Holder for 25 tubes for filling or display.
Works with R876-2 & R876-5
Not for R876-10.
R876-G **\$58.80**



Corrugated Geometric Dish
Base: 1" w x 1.14" L. Top: 2" w x 1.9" L.
1.77" h. Pack of 300.
R881-2 **\$68.00**
2.75" x 2.75" x 2.75" Pack of 400.
R881-2.75 **\$126.00**

Mini Glasses & Dishes



"Baroque" Mini Glass
2.5" h. Holds 2 oz. Pack of 300.
R836 \$74.40



Lid (Not Shown)
Pack of 300.
R599 \$24.80

Mini "Glass" Clear and Frosted
2.5" h. Holds 2 oz. Pack of 300.
R483-F \$83.40



Lid (Not Shown)
Pack of 300.
R599 \$24.80

Mini "Glass"
2" h. Holds 1.5 oz. Pack of 300.
Sea-green R483 \$79.80
Clear R483-C \$79.80



Lid (Not Shown)
Pack of 300.
R599 \$24.80
Compartment Lid
For R484 & R483.
Pack of 400.
X114-45 \$94.90

Maxi "Glass"
Clear. 3.25" h. Holds 2 oz. Pack of 300.
R484 \$79.40



Verrine "Glass"
Clear. 1.25" d x 3" h.
Holds 1.9 oz. Pack of 200.
R640 \$73.80



Double Wall Aperitif "Glass"
Clear. 2" d x 2.5" h.
Holds 2.5 oz. Pack of 200.
R532 \$92.40



Geometric Dish with Swirls
1.97" w x 1.97" L x 1.77" h.
Holds 1.75 oz. Pack of 300.
R834 \$59.70



Lid
Clear. Pack of 300.
R487-C \$24.20

Geometric Dish
2" w x 2" L x 1.75" h.
Holds 1.75 oz. Pack of 300.

Sea-green R487 \$46.90
Clear R542-2 \$46.90



Lid
Pack of 300.
R598-1.5 \$30.10

Clear Geometric Dish
1.5" L x 1.5" w x 3.25" h.
Holds 3.33 oz. Pack of 300.
R542-1.5 \$95.60



Clear Mini Verrine
Clear plastic. 2" d. Holds 1.5 oz.
Pack of 250.
R832 \$69.30



White Egg Cup
2.3" h x 1.5" d. Holds 2 oz.
Pack of 100.
R833 \$65.80



Mini Frosted Bowl
2.7" d x 1.5" h.
Holds 1.75 oz. Pack of 200.
R488 \$77.30



Mini Eared Dish
Clear. 3.25" L x 2.5" w x 0.5" h.
Holds 1 oz. Pack of 200.
R482 **\$74.90**



Square Dishes
Sea-green
2.5" L x 2.5" w x 0.5" h.
Holds 1 oz. Pack of 200.
R486 **\$77.10**
Clear
2.33" L x 2.33" w x 0.5" h.
Holds 1 oz. Pack of 360. (Not Shown)
R496 **\$81.90**



Rectangular Prism
Clear. 2.25" L x 1.5" w x 1.5" h.
Holds 3 oz. Pack of 200.
R641 **\$64.50**



Mini Oval Cocotte with Lid
2.75" L x 1.75" h.
Holds 2 oz. Pack of 200.
R743 **\$99.90**



Faux Slate Round Dish
3.25" d. Pack of 200.
R737-3 **\$49.20**



Faux Slate Tray
10.75" w x 7.75" L. Pack of 5.
R835 **\$16.60**

Flutes, Tubes & Stands



Tube "Glass"*
Clear and frosted. 5.75" h.
Holds 2 oz. Pack of 150.
R592 **\$67.80**

*Spoon sold separately (R534).



10 Tube "Glass" Holder*
Clear. 15.33" L x 1" w x 2.33" h.
R592-10 **\$34.90**

*Tubes sold separately (R592).



9 Tube "Glass" Holder*
Clear. 5" L x 5" w x 2.33" h.
R592-9 **\$24.80**

*Tubes sold separately (R592).



Mini Flute
1.25" top d x 4.5" h.
Holds 5 oz. Pack of 200.
R642 **\$54.30**



"Crystal" Flute
Clear. 1.88" Top d x 6.75" h.
Holds 3 oz. Pack of 200.
R489 **\$65.20**



Frosted Base
Fits R489 (Regular flute)
& R642 (Mini flute). Pack of 200.
R643 **\$47.10**



2 Compartment Lid
Fits R489. Pack of 400.
X114-50 **\$115.80**



Single Flute Stand*

Clear plastic with 1.4" d opening.
4.75" h.

R536 \$10.90

*Flutes sold separately (R489).



Double Flute Stand*

Clear with 1.4" d openings. 4.75" h.

R537 \$10.40

*Flutes sold separately (R489).



Nine Flute Stand*

Clear. 6.5" L x 6.5" w x 5.5" h.
1.25" w openings.

R491 \$14.90

*Flutes sold separately (R489).



16 Mini Flute Stand*

Clear. 6.5" L x 6" w x 2.75" h.

R642-16 \$39.90

*Flutes sold separately (R489).



10 Mini Flute Stand*

Clear. 8.5" L x 1.75" w x 0.75" h.

R642-10 \$31.90

*Flutes sold separately (R489).



"Crystal" Plastic Palette Tray*

Clear. 9.5" d. Each tray has 14 1.25" w openings.

R490 \$19.90

*Flutes sold separately (R489).



Six Flute Stand*

Clear with 1.4" d openings. 5.5" h x 14" L.
Each opening is 1.25" w.

R535 \$24.70

*Flutes sold separately (R489).



21 Flute Stand*

Clear. 15.8" L x 7.9" w x 3.5" h.

R597-21 \$97.20

*Flutes sold separately (R489).



16 Flute Stand*

Clear. 11" L x 8.66" w x 1.6" h.

R597-16 \$67.90

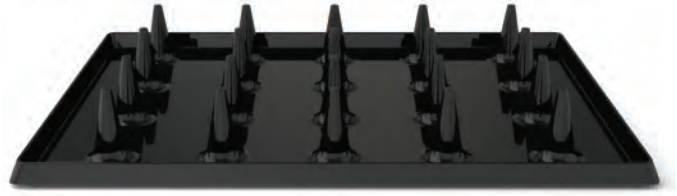
*Flutes sold separately (R489).

Created by famous French designer Philippe Starck



Starck Clear Flute*
5.63" h. Holds 5 oz. Pack of 400.
R732 \$149.00

*Flute works with R733-B. Will not stand alone.



Starck Flute Tray Black
14.75" L x 10.5" w. Pack of 5.
R733-B \$23.10

Push Ups



Clear Push Up with Lid
7" L overall. 3.75" h without handle.
1.75" d. Holds 4 oz. Pack of 100.
R746 \$52.80



Clear Mini Push Up
4.5" L overall. 2" without handle.
0.75" d. Holds 0.63 oz. Pack of 250.
R740 \$76.80



Clear Mini Push Up Pallet Tray
9.45" d. 19 holes. For use with R740.
R740-19 \$71.40



Clear Mini Push Up Stand
9.5" L x 1" w x 0.39" h. 6 holes. For use with R740.
R740-6 \$28.80

Cocktail Pieces



Asian Style Spoon
Clear. 4.75" L. Holds 1 tablespoon. Pack of 200.
R481 \$74.90



Tasting Spoon
Black. Asian style. 4.25" L. Pack of 300.
R593 \$95.90



"Crystal" Plastic Cocktail Stick
Clear. 4" L. Pack of 3000.
R492 \$191.00



Plastic Cocktail Stick
Clear. 9.5" L. Pack of 500.
R591 **\$98.70**



20 Cocktail Stick Stand*
Clear. 11" L x 8.66" w x 1.2" h.
Pack of 2.
R591-20 **\$59.70**

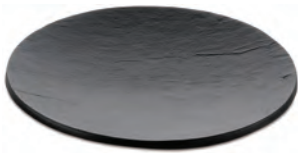
*Cocktail sticks sold separately (R591).



32 Cocktail Stick Stand*
Clear. 15.8" L x 8" w x 3.5" h.
Pack of 2.
R591-32 **\$113.00**

*Cocktail sticks sold separately (R591).

Large Cocktail Pieces



Faux Slate Round Dish
5" d. Pack of 100.
R737-5 **\$55.50**



Faux Slate Rectangle Plate
7" L x 3.5" w. Pack of 100.
R739 **\$78.30**



Faux Slate Oval Plate
7" L x 5" w. Pack of 100.
R738 **\$84.90**



Clear Plastic Tulip Glass
3.15" h. Holds 5 oz. Pack of 100.
R741 **\$62.70**



Oval Cocotte with Lid
5.5" L x 3.5" w x 3.3" h.
Holds 11 oz. Pack of 24.
R744 **\$45.00**



Squeeze Pop with Lid
1.9" top d x 5.9" L.
Holds 4.5 oz. Pack of 100.
R747 **\$45.90**



Lid for R531
Pack of 300.
R531-C **\$57.50**



Lid
Pack of 400.
R598-2.38 **\$56.20**



Clear Cup
Clear. 3" d x 2" h.
Holds 8 oz. Pack of 300.
R531 **\$124.00**

Small Clear Cup
2.13" h. Holds 6 oz.
Pack of 300.
R736 **\$74.70**

Medium Geometric Dish
Clear. 2.25" L x 2.25" w x 3" h.
Holds 6 oz. Pack of 400.
R542-2.38 **\$135.60**

"Baroque" Glass
2.5" d x 3" h. Holds 5 oz.
Pack of 300.
R836-5 **\$85.60**



Regular Frosted Bowl
Plastic. 4.25" d x 2.13" h.
Holds 6 oz. Pack of 200.
R488-4.25 \$133.80



Large Maxi "Glass"
Clear and frosted. 3.75" h x 2" d.
Holds 5 oz. Pack of 300.
R484-2 \$87.80

Compartment Lid
Pack of 400.
X114-55 \$115.80



Large Geometric Dish
Clear. 2.75" L x 2.75" w x 2.75" h.
Holds 7 oz. Pack of 400.
R542-2.75 \$147.00

Utensils



Long Cocktail Spoon
Clear. 7.5" L. Pack of 500.
R534 \$123.60



Starck Clear Mini Spoon*
4" L. Pack of 1000.
R735 \$49.90

*Created by the famous French designer
Philippe Starck.



New!

Medium Fork
5.5" L. Pack of 500.
R884 \$37.80



Medium Cocktail Spoon
Clear. 5" L. Pack of 500.
R497 \$49.90



4.5" L. Pack of 500.

Mini Fork
R590-F \$89.60

Mini Spoon
R590-S \$89.60



Combi Spoon/Fork
Sea-green plastic. 4" L.
Holds 1 teaspoon. Pack of 500.
R485 \$89.30



"Silver" Mini Spoon
4" L. Plastic. Pack of 1000.
R742-S \$99.30

"Silver" Mini Fork
4" L. Plastic. Pack of 1000.
R742-F \$99.30

PLA Serving Pieces

PLA (Poly Lactic Acid) is a 100% biodegradable bioplastics made from starch. After use, these 100% vegetable items can be disintegrated with living micro-organisms under a controlled process (80% humidity and 60° C). A new environmentally green version of plastic.



PLA Square Dish
Clear. 2.3" L x 2.3" w x 0.5" h.
Pack of 360.
R725 \$79.70

This item is not perfectly clear. It has a slightly opaque finish.



PLA Miniglass
2" h. Holds 1.2 oz. Pack of 300.
R726 \$77.30



PLA Square Appetizer Plate
5" L x 5" w. Pack of 100.
R727 \$79.50



PLA Rectangular Appetizer
7" L x 5" w. Pack of 100.
R728 **\$95.60**



PLA Geometric Dish
1.97" L x 1.97" w x 1.77" h.
Holds 1.75 oz. Pack of 300.
R730 **\$79.00**



PLA Ergo Spoon
3.62" L. Pack of 200.
R729 **\$69.30**

Bio-Degradable Serving Pieces

These biodegradable and compostable service pieces elevate disposable tableware to a brand new level. Offering the best in Japanese design, these pieces accentuate whatever foods and beverages they contain. They are suitable for cold or hot use (though not boiling) and they are oil and water resistant. They possess an elegant texture and a sturdy quality that is unparalleled in the category.

Design and quality are only half the story. These service pieces are also earth-conscious products, made from tree-free renewable materials (sugar cane fiber, bamboo, and reed pulp), and fully biodegradable and compostable.



Medium Square Plate
5.9" L x 5.9" w. Pack of 100.
R850-6 **\$73.50**

Small Square Plate
3.1" L x 3.1" w. Pack of 200.
R850-3 **\$83.60**



Medium Round Plate
6.5" L x 6.5" w. Pack of 100.
R851-6.5 **\$73.50**

Small Round Plate
3.5" L x 3.5" w. Pack of 200.
R851-3.5 **\$84.00**



Coffee Cup
3.5" d x 2.4" h. Holds 4 oz. Pack of 50.
R853 **\$46.40**



Wine Cup
3.9" d x 3.1" h. Holds 7.5 oz. Pack of 50.
R852 **\$46.40**

Stylish Design

These European designed, plastic serving pieces are stylish and elegant. Designed for appetizers or hors d'oeuvres, for buffets, pool, boat or party service. Disposable or re-usable.



Tasting Plates

Matte finish. Elongated corner for holding. 5.75" L x 4.25" w. Holds 1.5 oz. Pack of 100.

Black
R515-B \$43.70

White
R515-W \$43.70



Double Tasting Plates

Matte finish. Bowls holds 3 oz. and 1.5 oz. 7.5" L x 4.5" w overall. Pack of 150.

White
R620-W \$97.20

Black
R620-B \$97.20



Plastic Picks

3.5" L. Pack of 425.

Black
R520-B \$28.90

White
R520-W \$28.90

Plastic Skewers

7" L. Pack of 350.

Black
R521-B \$32.20

White
R521-W \$32.20



Appetizer Spoons

Perfectly balanced, matte finish, available in black or white, they have the look of china yet can be disposable or re-usable. 4.75" L. Each holds 0.18 oz. Pack of 250.

Black
R510-B \$82.50

White
R510-W \$82.50



Large Cocktail Plate White

This larger format disposable plate is ideal for multiple bite size snacks or appetizer size portions. It has the look of chinaware and a convenient 1 ounce impression that is great for additional sauces and also acts as a holder for item R805 (right) cocktail glass. 11.5" L x 8.25" w.

Pack of 96.
R804-W \$119.30

Pack of 24.
R804-W24 \$40.00

Cocktail Glass Clear Plastic

A beautiful stand alone disposable "glass" that works well for beverages and sweet or savory dishes. Also works in cooperation with R804-W (left), large cocktail plate, by fitting perfectly into the plate's impression. 3.25" d x 2.25" h. Holds 9 oz.

Pack of 420.
R805 \$184.00

Pack of 35.
R805-35 \$23.00



Small Appetizer "Glass"

Clear. 2.25" h x 1.9" d. Holds 2 oz. Pack of 180.
R530 \$91.80

Bamboo Cone Serving Tray

New!

Add a fresh and green look to your buffet or cocktail party with this hand finished bamboo cone serving stand. The top is fixed to brush stainless steel legs that provide a clean and contemporary look. There are 24, 1.25" holes, whose size and location are ideal for wood serving cones **R657-3.5** and **R657-5**, or any cone that you can craft to fit.
16" L x 11.22" w x 3.5" h

R861 \$57.00



5" cone (R657-5 shown)



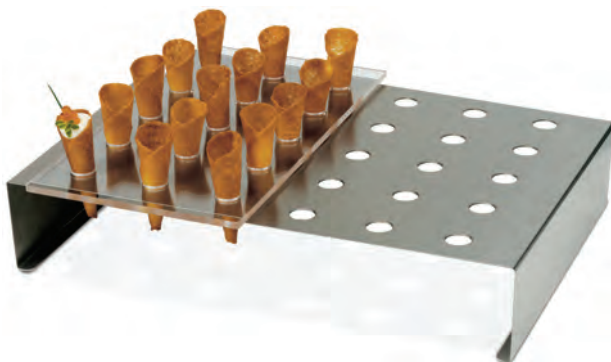
Flute Buffet Stand

Each acrylic stand holds 24 **R489** (Page 14) plastic flutes or Wood Serving Cone (**R657-3.5**). These clear stands are ideal for buffet service or for use in production (two 12 hole acrylic trays fit on each stand so that you can lift and serve). Two stands fit side by side on a standard full size sheet tray for easier transport.
R506 \$52.50



Flute Serving Tray

This practical and attractive lightweight tray is made from food-safe acrylic and holds 12 **R489** flutes or Wood Serving Cone (**R657-3.5**). Two of these trays will fit atop the **R506** (Left) buffet stand. 13" L x 7.75" w x 0.63" thick.
R507 \$25.80



Cone Buffet Stand

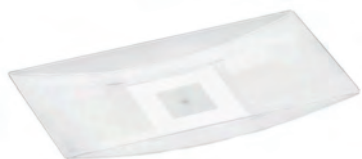
Each 18 gauge stainless steel tray holds 30 cones. These brushed-finished stands are excellent for buffet service or for use in production (two 15 hole acrylic serving trays fit on each stand for so that you can lift and serve). 15.88" L x 11.25" w x 3" h. Each hole is 0.75" d.
R500 \$57.00



Cone Serving Tray

Each attractive lightweight serving tray is made from food-safe acrylic and holds 15 cones. 12.25" L x 6.88" w x 0.19" thick.
R505 \$23.70

Carrying Boxes & Plates



Footed Rectangular Plate
5" L x 2.5" h. Pack of 100.
R748 \$42.00



Footed Squared Plate
5" L x 5" h. Pack of 100.
R748-5 \$51.00



Rectangular Appetizer Plate
Sea-green. 5.25" L x 2.5" w x 0.6" h.
Pack of 200.
R594 \$88.50



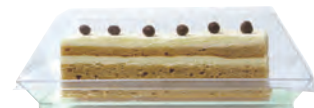
Rectangular Plate
Sea-green. 7" L x 5" w x 0.63" h.
Pack of 100.
R543 \$66.00

Cover
Clear cover for R543. Pack of 100.
R543-C \$39.00



Sea-green Square Plate
Sea-green. Plastic. 8.5" L x 8.5" w x 0.75" h.
Pack of 100
R547 \$123.60

Cover
Clear. 8.5" L x 8.5" w x 0.75" h. Pack of 100.
R547-C \$54.30



Square Appetizer Plate
Sea-green. 5" L x 5" w x 0.38" h.
Pack of 100.
R494 \$53.60

Cover
Clear. 1" h. Pack of 100.
R494-C \$19.90



Bento Plate*
Sea-green. 6.75" L x 6.75" w x 1.38" h.
Pack of 100.
R493 \$117.50

Cover*
Clear. Pack of 100.
R493-C \$54.00

*Plates not included (R493).



Bento Carrying Box*
Clear. 6.9" L x 6.9" w x 5.75" h.
Holds up to 4 Bento plates (R493).
Pack of 100.
R493-B \$219.70

*Plates not included (R493).

Glass Pouring Flasks

As featured in the Art
Culinary Magazine:
issue 99!



Made from heat resistant Borosilicate glass.

13 oz. 3.34" h.
R720-13 \$13.00

5 oz. 3" h.
R720-5 \$9.80



Art Culinary
Magazine
Page 53

Art Culinaire Magazine Issue 99
The International Magazine of Good Taste. This issue featuring
Oysters, Primitive Cooking, Exotic Rice, Citrus and Cider.
L320-99 \$20.00

Real glass!

Verrine Mini Glass

A chic and elegant way to present savory amuses or desserts, on buffets, in restaurants or cafes. These glasses give you a stylish platform to showcase colors, textures, and flavor combinations in small portions. This refined way to present food is a must for your culinary line up.



Column Glass

4" h x 1.38" d. Holds 2 oz.
Pack of 48.
R711 \$97.90



Tulip Mini Glass

2.5" h x 1.5" d. Holds 2.5 oz.
Pack of 12.
R710 \$31.50



Tilted Column Glass

3.5" h x 1.5" d. Holds 2 oz.
Pack of 6.
R717 \$11.80



Flared Mini Glass

3.38" h x 2" d. Holds 2.5 oz.
Pack of 6.
R713 \$15.30



Square Mini Glass

1.5" L x 1.5" w x 2" h. Holds 2 oz.
Pack of 72.
R712 \$139.00



Vegas Mini Glass

3.5" h x 1" d. Holds 2.25 oz.
Pack of 6.
R714 \$12.60



Oval Glass

2.5" L x 1.5" w x 2.5" h. Holds 4 oz.
Pack of 6.
R801 \$13.90



Bubble Glass

2" h x 2.25" d. Holds 4 oz.
Pack of 6.
R800 \$15.90



Mini Martini Glass

3.75" h x 3" d. Holds 3 oz.
Pack of 12.
R715 \$54.30



Short Mini Martini Glass

2.75" h x 3" d. Holds 3 oz.
Pack of 24.
R716 \$106.30



Small Oval Mason Jar

3.75" h x 2" L x 1.5 w. Holds 3.5 oz.
R829 \$2.50



Mini Mason Jar

2.4" h x 1.6" d.
Holds 1 oz.
R860 \$2.20

Bamboo Tasting Pieces

A series of natural disposable dishes that are both biodegradable and compostable. They offer an elegant option for service from renewable resources like bamboo, palm, and poplar trees.

Bamboo Trio Dish
7" L x 2.25" w. Pack of 12.
R679 \$17.90



Bamboo Square Dish
2.25" L x 2.25" w. Pack of 144.
R677 \$99.70



Square Bamboo Ramekin
2.25" L x 2.25" w. Pack of 144.
R650 \$126.00



Bamboo Tasting Spoon
3.5" L. Pack of 50.
R680 \$26.90



Bamboo Scoop
4" L. Pack of 144.
R676 \$80.30



Bamboo Spoon with Tail
3.75" L. Pack of 144.
R675 \$76.00



Bamboo Tasting Scoop
4" L. Pack of 144.
R648 \$89.40



Bamboo Rimless Square Dish
2.25" L x 2.25" w. Pack of 144.
R678 \$76.00



Round Bamboo Dish
2.25" d. Pack of 144.
R649 \$114.00

Boats



Disposable Poplar Serving Boats

Pack of 100.

2.5" L x 1.5" w x 0.5" h.
R588-2.5 **\$29.90**

3.75" L x 2" w x 0.63" h.
R588-3.75 **\$36.30**



Mini Deep Poplar Boat

2.62" L x 2" w x 1" h. Pack of 100.

R655-2.5 **\$7.90**



Poplar Serving Boat

Pack of 100.

2.5" L x 1.5" w x 0.5" h.
R656-2.5 **\$7.40**

6.5" L x 3.25" w x 0.75" h.
R656-6.5 **\$11.50**

4.5" L x 2.5" w x 0.5" h.
R656-4.5 **\$7.70**

8.5" L x 4" w x 1" h.
R656-8.5 **\$13.90**

5.5" L x 3" w x 0.5" h.
R656-5.5 **\$8.90**



Spotted Bamboo Serving Boats

3.25" L x 2" w x 0.5" h.
Pack of 50.
R630-3.25 **\$16.90**

5" L x 3" w x 1" h.
Pack of 40.
R630-5.5 **\$11.60**

4.5" L x 2.5" w x 0.63" h.
Pack of 50.
R630-4.5 **\$17.90**

6.75" L x 3.25" w x 1" h.
Pack of 20
R630-6.75 **\$12.80**



8.5" L x 4" w x 1.25" h.
Pack of 20
R630-8.5 **\$18.80**

Steamers



Lid only.

R652-LID **\$1.50**

3" d. Base only.

R652-BASE **\$1.50**



Mini Bamboo Steamer

2" d x 2.38" h.

R581 **\$6.20**



Bamboo Steamer

4" d x 2.5" h. Pack of 2.

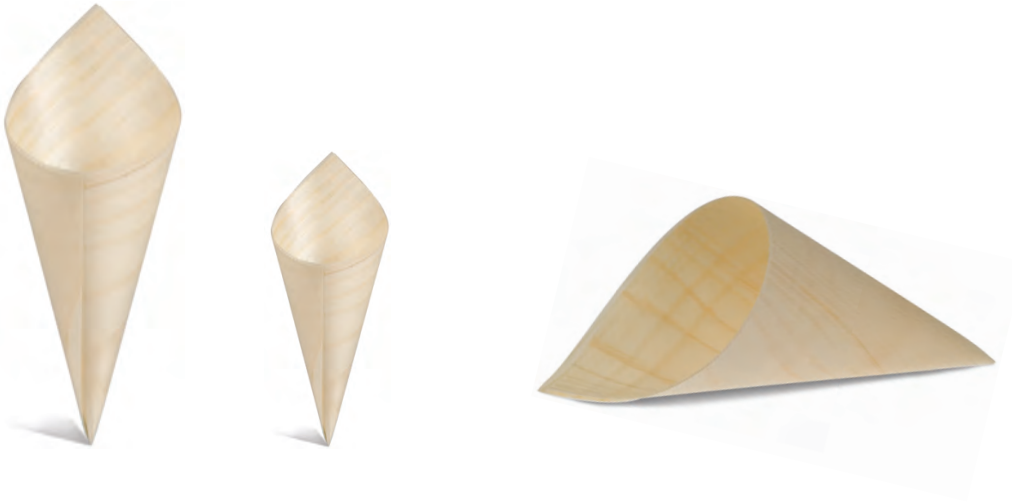
R802 **\$11.90**

Two Tier Mini Bamboo Steamer Kit

3" d x 3.5" h. Two bases, one lid.

R652 **\$3.90**

Disposable Wooden Serving Cones



1.25" d x 2.25" h. Pack of 100.
R657-2.25 **\$6.90**

1.75" d x 3.25" h. Pack of 100.
R657-3.5 **\$8.90**

3" d x 5" h. Pack of 50.
R657-5 **\$6.90**

Wooden Tasting Plates



Rectangular Poplar Wood Plate

Sold in pack of 25.

7.75" L x 5.5" w x 1.5" h.
R659-7 **\$8.50**

7.75" L x 5" w x 0.75" h.
R659-5 **\$8.50**



Square Poplar Wood Plate

Sold in pack of 25.

4.5" L x 4.5" w.

R658-4.5 **\$5.00**

5.5" L x 5.5" w.

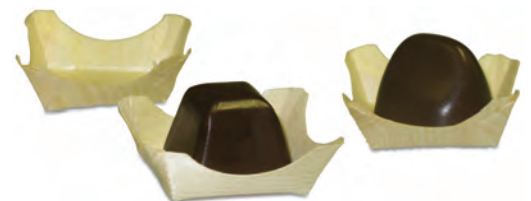
R658-5.5 **\$7.90**



Bamboo Leaf Dish

2.25" d x 0.75" h. Pack of 50.

R662 **\$11.20**



Wood Crest Plate

1.5" L x 1.5" w. Pack of 100.

R681 **\$11.60**

Forks & Spoons



Bamboo Tasting Fork
6.5" L. Pack of 600.
R647 \$72.50



Bamboo Mini Fork
3.5" L. Pack of 50.
R673 \$19.40



Bamboo Mini Spoon
3.5" L. Pack of 50.
R674 \$19.40



Wooden Mini Spoon
4.5" L. Pack of 100.
R667 \$4.70

Picks & Tongs



Picks
Pack of 50.
7" L.
R519 \$2.80.
50 or more: \$2.50 each.

Packs of 100.
3" L.
R525-8 \$2.80.
100 or more: \$2.30 each.

4" L
R518 \$2.20.
50 or more: \$2.00 each.

4" L.
R525-10 \$2.90.
100 or more: \$2.40 each.

Bamboo Tong
5" L. Pack of 240.
R651 \$73.60



Stainless Steel



Cocktail Picks
Elegant stainless steel picks for use with cocktail onions, olives or other fruit. Also, can be used with appetizers, and amuse buche or other finger foods.
3.25" L. Pack of 16.
R577 \$8.80



Mini Spoon
4" L. Stainless steel. Pack of 100.
R644-S \$74.80



Long Cocktail Spoon
7.5" L. Stainless steel. Pack of 50.
R645 \$78.90



Appetizer Cocktail Fork
5.25" L. Stainless steel. Pack of 24.
R803 \$52.50



Twist and Sparkle Beverage Carbonating System

Twist 'n Sparkle is a new innovative tool that adds a carbonated effervescence to your favorite beverage or cocktail. You no longer need to worry about diluting your drinks with carbonated water. You can add a bubble directly to the drink of your choice with this clever system of direct carbonation.

Simply pour in your favorite chilled beverage, insert an iSi soda charger, and twist on the sparkling wand. It's that simple and fast to achieve chilled customized carbonated juices, teas, floats, waters, and cocktails.

- Directly carbonates the cold beverages of your choice.
- No electricity or batteries needed.
- Won't take up valuable countertop space.
- Easy to use and easy to clean.
- Less packaging waste & pollution from making and transporting cans & bottles.
- Reusable, recyclable PET/PEN bottle and cap.
- iSi soda chargers are recyclable.
- BPA free.

B106 \$49.90

100%
Phthalates
FREE

BPA
FREE

Spare Bottle Set

Replacement bottle set.

B106-A \$29.90



Soda Charges

Pack of 10.

B993-10 \$7.80

Pack of 24.

B993-24 \$17.50



StrainRay™ Cocktail Strainer

Everything about the all stainless steel StrainRay™ is perfect whether it's the beautiful design or thoughtful construction, the StrainRay™ takes the sting out of straining drinks. 4.1" w x 8" h.

1108 \$23.50



Juliep™ Cocktail Strainer

The all stainless steel Juliep™ is the sturdy ice scoop and strainer all in one!

3" w x 6.5" h.

1109 \$15.70



Pro Jig Bar Jigger

The first multi measure jigger. Measure up to 12 different volume combinations up to 60 ml compared to 4 on a standard jigger. The angled jigger lip provides for clean, directed pour streams making it far easier to pour into glass without spillage. Large cavities reduces "miss-shooting". The ideal tool for making multi-volume drinks which are almost impossible to accurately dispense.

1106 \$9.80



ProCrush™ Muddler

The patented ProCrush™ takes muddling and crushing ice for cocktails to a new level. The innovative crushing head provides greater cushioning protection with reduced drag when muddling fruit, inverted upside down, the grooved ribbing on the shaft facilitates excellent non-slip gripping when used as an ice crusher. Made of stainless steel, silicone and ABS. 12.6" L x 1.7" d.

Weights 1 lb., holds 2.5 oz.

1107 \$39.00



C-Press™ Citrus Juicer Hand-Held

The all metal C-Press™ is an all purpose squeezer for lemons and limes. Designed to be tough as well as long lasting, the simple but elegant design turns the process of juicing citrus fruits into a painless task. 2.7" w x 10.9" h.

1110 \$21.60

Caviar Dropper for Sodium Alginate

This is the essential tool for simplifying the production of "Caviar" with a molecular gastronomy technique known as Spherification. This apparatus has 96 wells and allows you to create 96 individual droplets at one time. The kit includes two syringes and the 96 well dropper.



Caviar images courtesy of www.luxirare.com/parfait. Disposable serviceware available online at www.jbprince.com.



Caviar Dropper with Two Syringes
5" L x 3.3" w x 1.5" h.

U923 \$39.40

30 ml Plastic Syringe
1 oz. 5.5" L.

U922 \$1.50

Pipettes

Used for transferring or delivering measured quantities of liquids. A unique tool for serving hors d'oeuvres with a sauce.



4 ml. 3.5" L. Pack of 500.
R690 \$25.20

1.7 ml. 3.5" L. Pack of 500.
R690-3.5 \$25.20

15 ml. 6" L. Pack of 250.
R831 \$24.70



Smoking Gun Handheld Smoker

Excellent for finishing products that are cooked Sous Vide or other methods where food is not normally directly exposed to fire or smoke. Use classic flavors, such as hickory, mesquite, applewood, cherrywood, or let your imagination take over with things like Lapsang Souchong tea, lavender, or clove. One-piece, removable anodized aluminum smoking chamber. Aluminum fan – will not melt when heated. Low-noise motor. Includes 0.5 oz sample jars of Hickory and Applewood Smoking Sawdust. 4 AA batteries (included).

P386 \$79.90

Smoking Sawdust

For use with the Smoking Gun Handheld Smoker.
Each 4 jar assortment contains 1 – 4 oz jar of:

- Hickory
- Mesquite
- Applewood
- Cherrywood

P386-SD \$19.80



Sous Vide Equipment

Sous Vide Professional Thermal Circulator

The new Sous Vide Professional™ sets the standards for Sous Vide cooking. It was developed to meet the requirements of the world's best chefs and adds a whole new dimension of control to your kitchen. It's aesthetics, easy handling and flexibility are unique and without compromise. Professional chefs achieve perfect, repeatable results every time with the Sous Vide Professional™. For additional guidance, it also includes "Sous Vide - Guide to Low Temperature Cooking" by Thomas Keller, and an instructional DVD.

\$100 gift certificate with purchase*



- Precise temperature control within 1/10th of a degree.
- Water circulation provides maximum consistency (compared to non-stirred devices).
- Compact design makes for easy storage.
- Clamp the Sous Vide Professional™ to any size tank with rounded or flat walls up to 30 liters.
- Exceptional control of liquid heating to within 0.09° (0.05°).
- Dedicated temperature control enables you to quickly set or adjust cooking temperature.
- Easy up and down buttons allow you to select and set cooking temperature to a 1/10th of a degree.
- Temperature readings available in Celsius or Fahrenheit.
- Controls liquid heating up to 212° F (100° C).
- Control cooking liquid circulation level by easily adjustable pump pressure outlet.
- High-grade stainless steel heating coil and pump ensure lasting, trouble-free performance. Large backlit display for easy reading.
- Rated for 30 quarts.



Safety

Over Temperature Protection: Yes.

Failsafe Heater Control: Yes.

Low Liquid Level Safety: Yes.

Alarm and Fault Indicators: Icon indication.

Overall Dimensions: 14.13" h x 3.88" w x 7.38" d.

Heater: 1100 Watts.

Minimum Immersion Depth: 3.38".

Warranty: 1 year.

P357 \$799.00

*From now until July 1st, 2010, or while supplies last, when you purchase a Sous Vide Professional you will receive a \$100 gift certificate good toward your next purchase from JB Prince.

Digital Sous Vide Thermometer

This thermometer has a splash resistant sealed membrane keypad, making it ideal for environments where liquids are used, and it's also easy to clean. It has a minimum/maximum feature that will provide you with the lowest and highest temperatures that have registered during the thermometer's use.

A hold function allows you to lock in a temperature reading for easier viewing and it reads in both Fahrenheit and Celsius. The unit has a protective rubber sleeve that acts as a tabletop stand. It accepts a "K" type probe that is not included.

Temp. range: -418° to 2501° F (-250° to 1372° C).

Power source: 4 triple AAA batteries (included).

Dimensions: 5" L x 2" w x 1" d.

Warranty: 3 years from manufacturer.

U840 \$182.00



Ultra Fine Hypodermic Probe with Type K Connection

An ultra fine probe designed for penetrating soft or semi-soft materials with minimal intrusion. Great for Sous Vide applications and can be used with any thermocouple that accepts type "K" connection probes such as the Digital Sous Vide Thermometer (item number U840).

Temp. range: -418° to 600° F (-250° to 315° C).

Probe length: 2.5".

Diameter: 0.035".

Cable length: 2.5'.

U841 \$106.00



Thermal Circulator

- Provides exceptional control of liquid heating and circulation, assuring a constant temperature throughout the container.
- Three preset buttons make selection of frequently used cooking or thawing temperatures fast and fool-proof.
- Attaches directly to stock pots, roasters, and hotel pans.
- Low and high circulation speeds provide precise temperature control.
- Suitable for any cooking liquid, including stock, juice, oil, and emulsions.
- Stainless steel heating coil and circulating pump.
- Liquid circulating capacity: 28 liters.
- Rated to circulate 28 L.

Specifications:

Cooking Temperature: Up to 302° F.

Immersion Depth: 3" minimum, 7" maximum

Overall Dimensions: 12.25" L x 4.63" w x 5.75" d.

Heater: 120 V, 1100 watts.

Electrical Power: 120 V, 50/60 Hz., 12 amps.

Warranty: 1 year labor, 2 years parts.

P350 \$944.00



Protective Shield

Prevents cooking bag from touching the Thermal Circulator's heater element or pump.

P350-S \$113.00



Storplus Food Box

Plastic. 12" x 18" x 19".

U925 \$35.10



3 mil Vacuum Pouches

These bags are ideal for storage and low temperature "Sous Vide" style cooking. They are rated for a temperature range of -58° F to 176° F, and have superb clarity.

6" x 8". Box of 1,000.

P376-6 \$44.60

12" x 16". Box of 500.

P376-12 \$89.30

8" x 12". Box of 1,000.

P376-8 \$89.30



Adhesive Tape

When cooking Sous Vide, a small pointed thermometer probe is often inserted through plastic pouch and into the food to measure internal temperature. It's advisable to apply a strip of this tape on the pouch before pushing the probe through. It will help maintain the seal and pressure of the pouch. 7' L.

U839-Tape \$5.90

"Koch" Chamber Vacuum Packaging Machines

Top quality vacuum pack machines designed for restaurant use. Table top with compact footprint. Removes air and seals in one operation. Made in USA. The **P371** base, inner chamber and lid are made of molded, impact-resistant plastic. The **P375** base and inner chamber are stainless steel with a clear acrylic lid so inner chamber can be viewed during processing. Both machines use the Busch® 021 vacuum pump and are UL approved.

	a. P371	b. P375
Outside Dimensions		
Width:	25"	25.6"
Diameter:	19.3"	19"
Height With Top Open:	31.8"	32.5"
Height With Top Closed:	14.4"	14.4"
Inside Dimensions		
Width:	16.8"	16.4"
Diameter:	19.5"	19.9"
Height:	7.3"	6.8"
Sealing Bar Length:	16"	16"
Pump (horsepower):	1.25	1.25
Net Weight:	121 lbs.	178 lbs.
Electrical (volts, Hz, amps):	120, 60, 13	120, 60, 13
Speed (seconds per cycle):	20-30	20-30
Price:	3,395.00	4,450.00
	No dealer discount	



JB Prince Company, Inc.

36 East 31st Street

New York, NY 10016

Tel: 800-473-0577 Fax: 212-683-4488

www.jbprince.com

customerservice@jbprince.com

PRSR STD
U.S. Postage
PAID
BRIDGEPORT, CT
Permit No. 347

Porcelain Slate Tray

The BASALT collection by REVOL is a perfect imitation of natural slate while maintaining all the benefits of porcelain.

- Non porous food safe construction.
- Freezer and oven safe.
- High impact resistance, does not crumble, craze or scratch with use.
- Adapted to professionals intensive use: It is dishwasher safe and microwave safe.
- Designed for comfort: BASALT edges are molded for easy handling.
- Every tray is slightly concave to retain juices in the middle of the piece.

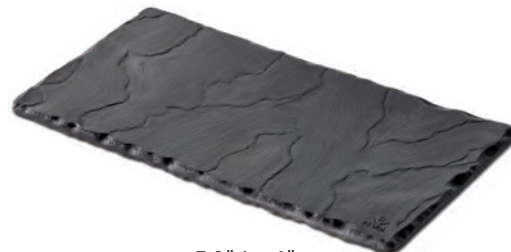
9.8" L x 4.8" w.
R838 \$22.00



11.8" L x 4.3" w.
R839 \$25.00



11.8" L x 7.8" w.
R840 \$39.00



7.8" L x 4" w.
R837 \$17.00