

Automatic Fondant Funnels (*Sauce Guns*)

All models allow one-handed operation for filling chocolates, making fondant candies, etc. Also excellent for rapid, precise dispensing of sauces, dressings, etc. on plates. Mechanisms can be easily removed for cleaning.

Mini Automatic Fondant Funnel & Stand

Stainless steel cone & plunger; polycarbonate handle & release. 1 quart capacity, 4 $\frac{3}{4}$ " diameter, 8 $\frac{3}{4}$ " high. Plastic stand included. 8mm & 4mm openings.

U649



German Made Funnel

2 quart capacity, 7" diameter, 9" high. Dispenser opening is 8mm ($\frac{1}{4}$ "). With filler tube it is 4mm. Made of stainless steel and plastic. Use filler tube for chocolate shells. Dishwasher safe.

U523

U523-B Stand for funnel. Stainless steel.

Replacement parts available.

Italian All Metal Funnel

2 quart, 8 oz. capacity, 8" diameter, 9" high. Dispenser opening is 8mm ($\frac{1}{4}$ "). With filler tube it is 4mm. Stainless steel and cast aluminum.

Includes stainless steel stand. Replacement parts available.

U650



French Sauce Guns

Excellent tool for dispensing sauces, or filling chocolate molds quickly and precisely. Includes two interchangeable tips. All stainless steel. Made in France.

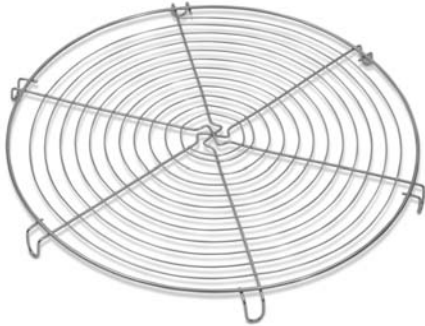
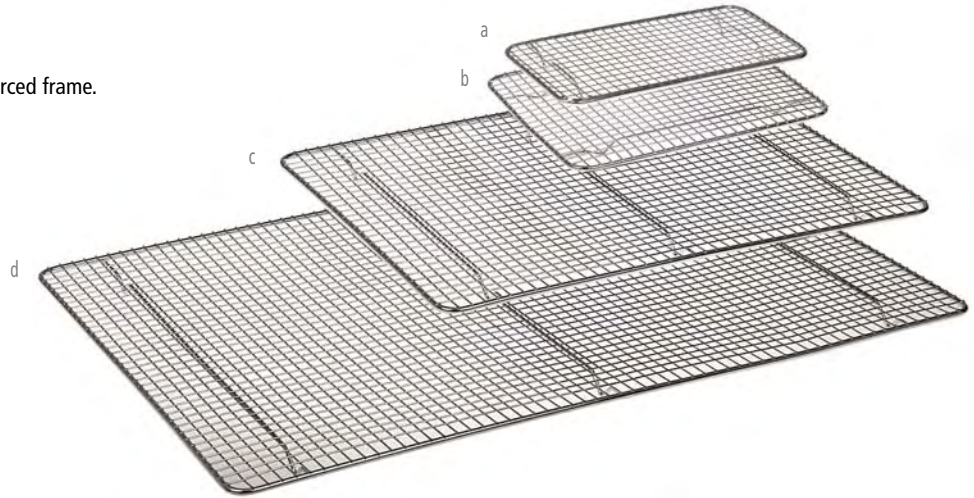
U921 1.5 liter capacity, With stand.

U920 1.9 liter capacity, Without stand.

Bun Pan (Icing) Grates

High quality grates. Chromed steel wire grid on reinforced frame.

- a. **B964** One third size 10" x 5" x ½"
- b. **B963** One quarter size 10" x 8" x ½"
- c. **B965** Half size 12" x 16½" x ½"
- d. **B966** Full size 16½" x 24" x 1"



Cake Cooling Rack

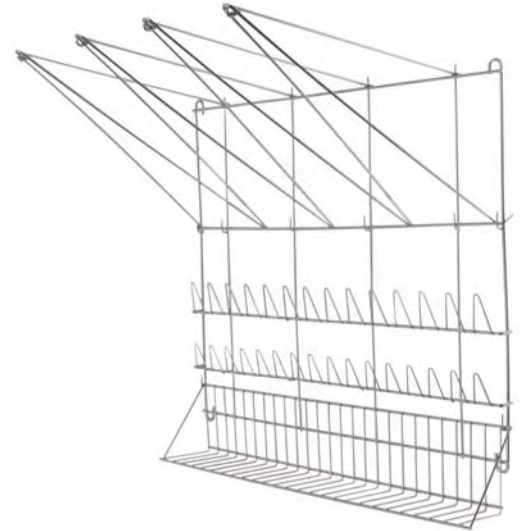
Heavy duty construction. Wires soldered to frame throughout. ¾" high feet. Thin stainless steel.

- B889-28** 11" diameter
- B889-32** 13" diameter

Baker's Drying Racks

Has arms to hold 4 bags, wire pieces for 28 tips, and a shelf for brushes. Will not rust or leave rust marks. 20" x 20".

- B675** Stainless steel.
- B703** Same as B675 but made of vinyl coated wire. **Not shown.**



Cake Knife Cleaner

For professional appearance in restaurants, pastry shops & kitchens. 18/8 stainless steel with rubber bottom insert and cleaning guide. 4" diameter, 8" high.

B649-A

NOTE: knife not included.



Manual Glaze Sprayer

Simple, well-made and easy-to-use. European hand operated pump is used to spray glazes. Container can be microwaved to liquify product. Comes apart for easy cleaning. Holds 48 oz. 12" high.

B985

Decorative Tube Sets



27 assorted **stainless steel** tubes plus
2 flower nails and chrome steel coupling.
B603-C



51 assorted **nickel-plated** tubes plus
2 flower nails and plastic coupling.
B603-A



26 assorted **nickel-plated** tubes plus
2 flower nails and plastic coupling.
B603-B



MATFER Clear Plastic Pastry Tubes

These tubes are made from "polycarbonate" (super strong, clear plastic) so the tubes will not break, bend or rust. Tubes fit any bag. Box of 24 decorating tubes: 12 plain, 10 star, 1 number two leaf tube, & 1 tube for yule logs.
B833



12 Piece Large Tube Set

Assorted large tubes designed for mashed potatoes, cookie dough, butter cream, etc. Stainless steel. Seamless. Includes cleaning brush and plastic box.

B615

B616 Cleaning brush (included with the set and sold separately).



Stainless Steel Pastry Tubes

Seamless, straight sided. Use directly in bag. Openings range from 1/8" to 3/4". **Order individually by specifying size from 0-9. Or order in sets of 10 by adding the letter "S" to the item number.**

a. **B611** French Star

c. **B613** Closed Star

b. **B612** Plain

d. **B614** Star



Our Finest 12 Piece Tube Sets

Rolled edge, made in Germany. 12 tubes ranging from 4mm (1/8") to 15mm (3/4").

e. **Stainless Steel Tube Sets**

f. **Tinned Steel Sets**

B686-A Plain tip

B686 Plain tip

B687-A Open star

B687 Open star

Plastic Pastry bags

Clear, professional quality, disposable or reusable, sanitary and very flexible. Can also be used as liners for cloth bags for easier cleaning. No more mess, no washing, no staining; extends the life of your more expensive cloth bags. 100 bags per dispenser box.

SOFTOUCH™ Pastry Bags

Blue Box. With a very supple "feel" for cake icing and any other cool to warm food. Not for hot foods.

- B653-A 21" bags
- B653-B 21" bags on a roll
- B653-C 16" bags

PERFECT™ Extra Strength Pastry Bags

Red Box. For use with hot or cold foods.

- B653-100 21" bags



EXPORT Cotton Pastry Bags

Our best, most durable bag for heavy, continuous use. Polyurethane-coated (5 layers), heavy cotton pastry bags with welded seam and reinforced bottom. This bag is boilable, impervious, and will not stiffen.

- B601-12 12" (28cm)
- B601-14 14" (34cm)
- B601-16 16" (40cm)
- B601-18 18" (46cm)
- B601-20 20" (50cm)
- B601-22 22" (55cm)
- B601-24 24" (60cm)



Nylon Pastry Bags

Supple and flexible, these pastry bags are made of tough, impermeable nylon with fused seams. Made in Germany.

- B781-12 12" (28cm)
- B781-14 14" (34cm)
- B781-16 16" (40cm)
- B781-18 18" (46cm)
- B781-20 20" (50cm)
- B781-22 22" (55cm)
- B781-24 24" (60cm)



Super-Flex Pastry Bag

A new innovative rubber pastry bag material that has strength, flexibility, and softness. A smooth interior for easy outflow of piped products and a textured outside for superior grip. A specialized welded seam keeps the bag clean and durable.

- B995-45 20" (50cm)



Sac A'Flex Silicone Pastry Bag

A high grade heat resistant silicone bag that is ideal for hot and cold items with a temperature range of -76°F to 446°F (-60°C to 230°C). Extremely easy to clean, dishwasher safe, and fast drying. A superb substitute for traditional canvas and plastic pastry bags.

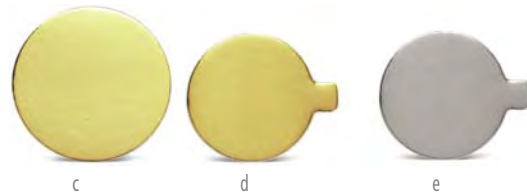
- B997 18" (46 cm)





Wide Mouth Plastic Squeeze Bottle
Easier to fill. Made from food safe plastic. 8" high, 2 5/8" diameter, 16 oz capacity.
a. **B825-16**

Soaking Bottle
Square bottle with perforated top. Ideal for moistening cake layers. Allows you to read measurements upright or inverted. 1000 ml or 38.8 fluid ounces. 11.5" tall.
b. **B953**



Individual Cake Boards

Gold and silver foil laminated to white cardboard. 500 pieces per package.

- c. **B942** 4" diameter, without tab.
- d. **B941** 3 3/4" diameter, with tab.
- e. **B940** 3 3/4" diameter, with tab (silver)



Fine tip

- B824-05** 3 1/2" high (1/2 oz)
- B824-1** 4" high (1 oz)
- B824-2** 4 1/4" high (2 oz)
- B824-4** 5" high (4 oz)
- B824-6** 6 1/2" high (6 oz)
- B824-8** 6 3/4" high (8 oz)
- B824-16** 7 1/2" high (16 oz)

Powdered Sugar Shakers

For powdered sugar, cocoa, cinnamon, etc. Stainless steel with mesh lid.

Asian-made with pressure hold cap.

- f. **B683-B** 3 3/4" high, 8 oz
- European-made, all stainless steel with lock-top. 4 1/4" high, 10 oz
- g. **B683-A**
- European-made, stainless mesh lock-top & see-thru plastic bottom. 4 1/4" high, 10 oz
- h. **B683-C**



Strudel Roller (Bear Claw Cutter)

Stainless steel with wood handle. Cuts 2 1/2" lines in dough. 7" overall.

- i. **T263**

Pastry Wheels

Nickel plated with wooden handle. 2" diameter, 7 1/2" long.

- j. **B690** plain
- k. **B691** fluted

Large Pastry Wheel

Stainless steel wheel with plastic handle. 4" diameter, 9" overall

- l. **B780**



Plastic Bowl Scrapers

Stiff (Matfer)

- m. **B631** 4 3/4" x 3 3/4"

Most flexible (Thermohauser)

- n. **B632** 5 1/4" x 3 1/2"

Medium (Thermohauser)

- o. **B633** 4 3/4" x 3 1/2"

- p. **B634** 4 1/2" x 3"

Silicone Bowl Scrapers

Silicone encapsulated spring steel provides rigidity and flexibility. Heat resistant to 600° F. Made by ISI. 5 1/4" x 3 1/2".

- q. **U930**



a. ST. HONORE Tubes

Set of 3 stainless steel tubes with rolled edge and deep "V" cut for classic peaked style. Width of openings: ¾" (20mm), 1⅞" (30mm) & 1½" (40mm). **B952**

b. ST. HONORE Decorative Tip

Strong, clear plastic (polycarbonate) with deep "V" for classic peaked style. 2¼" tall, ½" diameter spout. **B805**



Nickel Plated Rose Maker Tips

B807-A ½"
B807-B ⅝"



Nickel Plated Rose Nails

B672-7 1½" diameter
B672-13 2" diameter



Nickel Plated Leaf Tips

B808-A ⅜"
B808-B ½"



Delrin Coupling
B671 Strong, rigid plastic



Nickel Plated Bismark Tube
B806 2¾" high overall

Natural Pastry Brushes

Heavy duty pastry and grease brushes. Pure boar bristle in epoxy ferrules for longer life and better sanitation. Wood handles. Round brush is domed.

- B606-1** 1" wide
- c. **B606-1.5** 1½" wide
- d. **B606-2** 2" wide
- B606-3** 3" wide
- e. **B606-4** 4" wide
- f. **B606-12** round head, 12" overall



Plastic Pastry Brushes

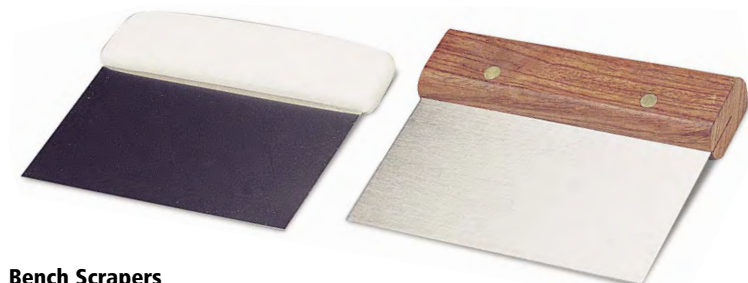
"Meteor" brand brushes. Bristles are molded directly into handle eliminating spaces for bacteria growth. Molded hook for hanging on pot rim or for elevating bristles when lying on work surface. Plastic handle and boar bristle.

- h. **B834-2** 2" wide
- i. **B834-3** 3" wide



OXO Silicone Pastry Brush

Heat resistant up to 600° F and easy to clean. Center bristles have holes designed to hold liquid for transport and spreading. 8" long. g. **B696**



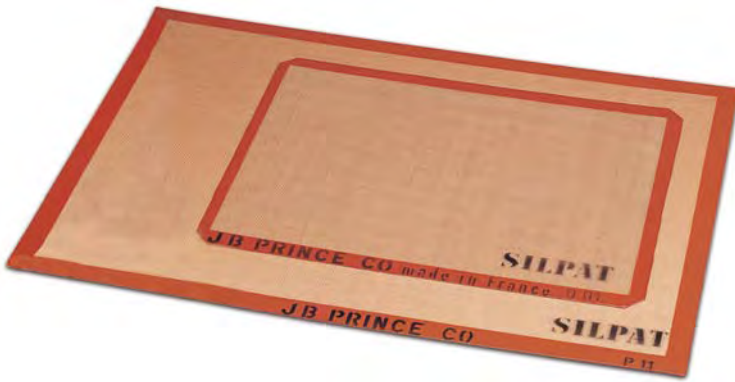
Bench Scrapers

B635-PL stainless steel with "sure grip" plastic handle 6" x 4½".
B635 same as above but with wooden handle.



Bench Brush

6 rows of soft natural white bristles set in plastic for fast, easy brush up. 9" wide, 1¾" thick, 3¼" high, with 2¼" bristle. **B821**



Silpat Non-Stick Baking Mat

Thick flexible mat transforms any sheet pan into a non stick surface. Also used for working sugar, chocolate, etc. Can be reused thousands of times, withstands temperature from - 40°F to over 550°F.

B705 Full-size 24½" x 16½". Fits standard US sheet pan.

B706 Half-size 16½" x 11¾". Fits standard half-sheet pan.

B710 Large-size 30" x 22". Ideal as a work surface.

B711 Quarter-size 11½" x 8"



Silpain Non-Stick Bread Baking Mesh

Open mesh with silicone coating for better air circulation, quicker baking. Black surface aids browning. Excellent for frozen or fresh dough. Re-usable thousands of times, easy-to-clean. Withstands -40° F to 550° F. Best used with perforated sheet pan or wire rack.

B708 Full-size 24½" x 16½"

B709 Half-size 16½" x 11¾"



ROUL PAT Non-Stick Worksurface - From the makers of SILPAT

Non-stick mat used as a work surface to roll out or knead dough, gum paste, fondant, sugar or chocolate. Works like Silpat but is coated with silicone on BOTH sides so it won't slide. Oven safe to 500° F.

B712-A 25" x 16½" Full size

B712-B 31½" x 23"



Non-Stick Baking Sheet

Thin sheet coated on both sides with Teflon. Reusable 200 times. Nothing sticks. Just wipe clean. Fits standard U.S. sheet pan.

B707

Silform Flexible Bread Baking Forms

From the makers of "Silpat", these non-stick forms make bread baking easier and better. The forms are made of silicone coated mesh. They are non-stick, perforated for better heat flow, and retain their shape permanently. Can go directly from freezer to oven (up to 550° F). Should be placed on a sheet pan, preferably perforated, when baking. Fits in standard U.S. sheet pan. Dimensions: 17½" x 25". NSF approved.

Baguette

M457-A 5 loaves, each measure 3½" x 1¼" x 25"

Individual Loaves

M457-B 10 loaves, each measure 2¾" x 1¼" x 12"

**Flexipat Non-Stick Pan Liner**

Flexipat® is a silicone pan liner that helps you create even, clean edge layers. It has a temperature range of -40° F to 536° F making it ideal for frozen and baked applications. An excellent tool to have when creating formed and layered deserts. 25" x 15" x ⅜".

B714

**Silicone Pan Liners**

These flexible silicone liners, with clean 90° corners will allow you to spread layers of sponge cake, mousse or fruit jelly quickly and evenly. These forms can be easily baked or frozen with a temperature range of -76° F to 446° F. Ideal for creating even layers, roulades, and other formed preparations.

B998-A 16¾" x 13¾" x ⅛"

B998-B 21¼" x 13¾" x ⅛"

**Silicopat Full Size**

A silicone work surface that is completely smooth on one side, allowing you to work with products and not leave any marks. The reverse side is textured to help prevent the mat from slipping. An excellent non stick work surface or baking mat that can be used in temperatures ranging from -79°F to 446°F.

B787 23½" x 15¾"

B788 15¾" x 11¾"





Metal Cake Markers

Very strong for cakes as well as frozen desserts, 12" diameter in stainless steel.

- B628-10 10 portions
- B628-12 12 portions
- B628-14 14 portions

Plastic Cake Markers

2 patterns, one on each side of the marker. Very strong plastic, 10" diameter.

- B627-A 12 & 16 portions
- B627-B 14 & 18 portions



Lattice Dough Cutter

Cut lattice pattern into dough easily with this well-made plastic stencil/cutter.

B629 12" diameter

Lattice Dough Rollers

Roll over dough and pull apart for quick, easy effect. Excellent for pies or puff pastry. Blades cut 4".

- B652 Stainless steel and wood handle
- B715 Same as above in plastic.

Dough Dividers

Adjustable dough dividers with lock & stainless steel wheels. Cut strips from 1/2" to 5" across.



Five 2" diameter wheels.
B604

Extra strong frame & lock. Made in Europe.
Five 2" diameter wheels.
B842

Same as B842 except it has seven wheels.
B842-7

Ten wheel, 5 plain edge & 5 scalloped edge.
B843



Multiple Disc Cutter

For cutting bread sticks, brownie dough, cookies and other baked products. Stainless steel construction. Plastic handles. Each roller cutter is movable so user can customize spacing.

Stainless Steel Rod

30" plus plastic handles **Does not include roller cutters. Order cutters separately.**
B918-30

Sharpened Roller Cutters

4 1/4" diameter with shoulder rivet for easy change in spacing.
B919

Rolls of Heavy Clear Acetate

The plastic used is food-safe polystyrene. Acetate roll for cakes and dessert wraps or as mold liners. 500 ft. per roll.

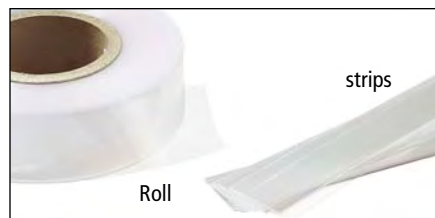
	H
B860-1.38	1¾
B860-1.75	1¾
B860-2	2
B860-2.38	2¾
B860-2.5	2½
B860-3	3



Acetate Strips

The plastic used is food-safe polystyrene. For lining dessert molds. Makes removal easier. 1,000 strips per package.

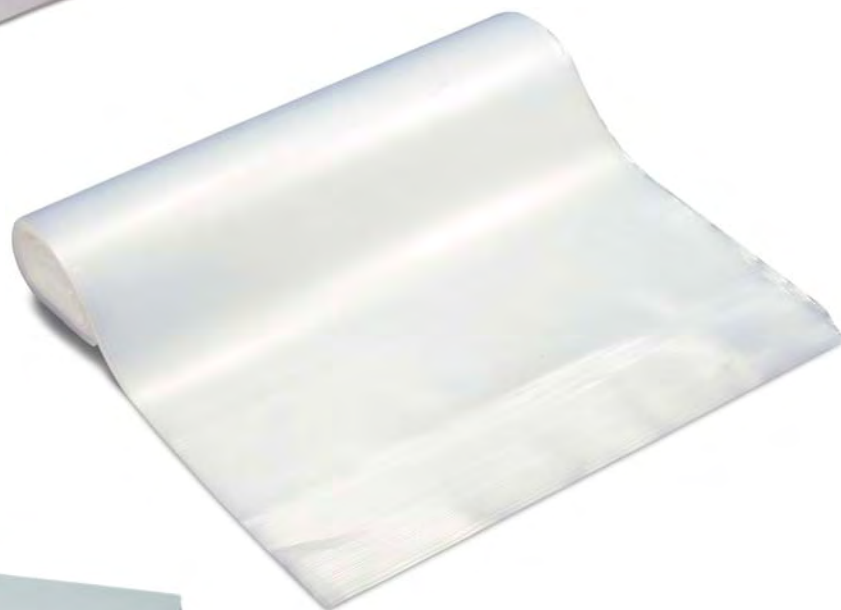
	L	H	USE WITH RINGS OF MAX. Ø
M435-1	6½	1	2
M435-1.5	9½	1½	3
M436-A	8	1½	2½
M436-C	9¾	1¾	3
M436-D	9¾	2½	3
M436-E	9¾	2	3



Acetate Sheets

The plastic used is food-safe polystyrene. Excellent for chocolate work. Easy to handle. Shiny surface. Won't dull finish of chocolate. Non-stick. Each sheet is 24" x 15".

B861-100 Packed 100 to a carton



Polyethylene Sheets

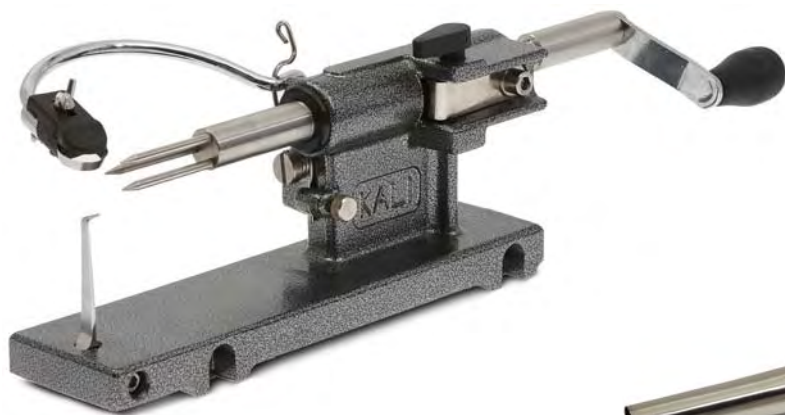
Soft and flexible plastic. Excellent for chocolate work. Packed 100 sheets per bag. Each sheet 23½" x 15¾".
B864



Parchment (Easy Release) Paper Sheets

Quilon coated parchment for baking trays, piping bags, and cooking "en papillote". 24¾" x 16¾". 1,000 sheets per box.
B900

Kosher Approved.

**KALI Apple Peeler**

European made machine that peels, slices and removes the core in one operation. The famous KALI is made of stainless steel blades and gear parts contained in a strong cast aluminum body. Made in France. 13" long by 5" high. Includes table clamp.

B637

9-B637-1 Replacement slicing blade - "L" shape

9-B637-6 Replacement peeling blade - round

Other parts are also available, please inquire.

Cream Roll Horn

Stainless steel.

B623 Large 6 $\frac{3}{4}$ " x 1" x $\frac{3}{8}$ "**B622** Small 5 $\frac{1}{2}$ " x 1 $\frac{1}{4}$ " x $\frac{1}{2}$ "**Cannoli Form**

Stainless steel.

B617 Small 3 $\frac{1}{2}$ " x $\frac{1}{2}$ "**B618** Large 5 $\frac{1}{2}$ " x 1"**B619** Mini 8" x $\frac{3}{8}$ "**Oven Safe Cone Form**

Oven safe. Withstands temperatures up to 390° F (-200° C).

B999 5 $\frac{1}{2}$ " long, 1 $\frac{1}{2}$ " at the top.**Cornet Molds**

Tinned steel. One end sealed.

B882 Large 2" opening x 5 $\frac{1}{2}$ " long**B881** Small 2" opening x 3 $\frac{1}{2}$ " long**Ladylock Form**

Stainless steel.

B621 Large 6 $\frac{1}{2}$ " x 2" x $\frac{1}{4}$ "**B620** Small 3 $\frac{1}{2}$ " x 1 $\frac{1}{2}$ " x $\frac{1}{4}$ "**Pastry Filling Machine**

Sturdy design for uniform filling of donuts, eclairs, etc. Easy to clean, 2 liter stainless steel funnel.

B651

For replacement parts, please inquire.

Display Stands

Strong anodized aluminum plates with chrome steel posts.

**Five Plate Stand**Plate sizes: 8", two 10", two 12 $\frac{1}{2}$ ". Posts: 6 $\frac{1}{2}$ ". Total height: 15"**R119-5****3 Tier Rectangular Stand**Perfect for display table riser. Has three rectangular, anodized aluminum plates (10 $\frac{1}{2}$ " x 16 $\frac{3}{4}$ ", 11 $\frac{1}{2}$ " x 19 $\frac{1}{2}$ ", 12 $\frac{1}{2}$ " x 22") and 6 $\frac{1}{2}$ " chromed steel posts. Total height 18".**R120-3**

Side Arm Display Stands

For beautiful presentation of cakes and other desserts. Also excellent for window or buffet with fruit, cheese, or pastry. Arms are adjustable to any position. Very strong European construction of anodized aluminium plates, chromed steel post and sturdy metal base.



Four Tier Stand

Plate sizes: 6", 8", 10", 12". Posts: 3¼" high. Total height 14½".

R117-A



Six Tier Stand-Half Height

Plate sizes: 2 each 8", 10", 12". Posts: 3¼" high. Total height 22".

R117-C



Six Tier Stand

Plate sizes: 2 each 8", 10", 12". Posts: 6½" high. Total height 42".

R117-B

Multi-Tier Cake Stands

Strong anodized aluminum disks, and chromed steel posts on metal feet make these stands much more stable than plastic displays. 6½" between disks.



Five Tier Wedding Cake Stand

Plate sizes: 8", 10", 12", 16", 18", total height 30"

R116-A



Four Plate Stand

Excellent as corner riser on buffet table. Plate sizes: 8", two 10", 12½". Posts: 6½". Height: 22"

R118-4



Seven Tier Wedding Cake Stand

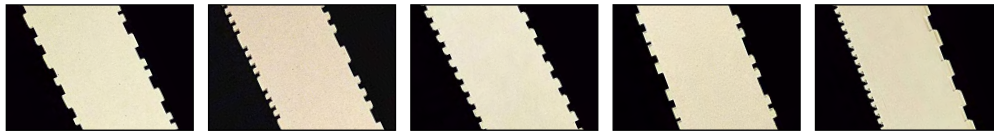
Plate sizes: 6", 8", 10", 12", 16", 18", 20" total height 44"

R116-B



Working on Silpats

Layers of various confection are "combed" to create decorative stripes, and then cut with dough cutters into strips to be used in creating superb patisserie.



Decorating Comb Set

Stainless steel frame with 5 rubber comb inserts. Each insert has 2 rows of decorating grooves for a total of 10 different designs. Overall length 27 1/2". B845



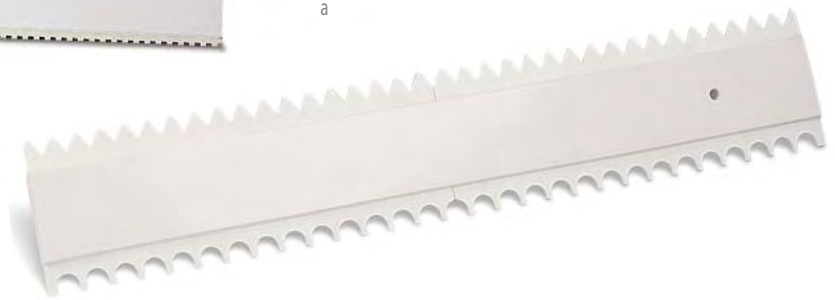
Decorating Combs

Plastic combs with different grooves on each side.

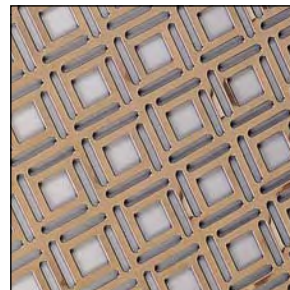
- a. B846-A Overall length 14"
- b. B931 Overall length 28"
- c. B846-B Overall length 14"
- d. B932 Overall length 28"

Charlotte Bisquit Comb

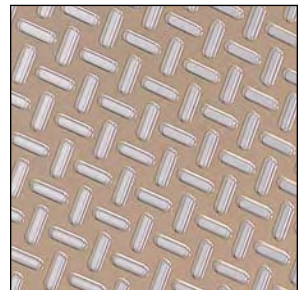
Plastic comb with different grooves on each side. One side makes dome design, the other pyramid design. Overall length 28". B847



Decorating Stencil Grills
For the preparation of decorative designs from chocolate, sugar paste, biscuit dough, etc. Each grill measures 23 1/4" x 15 1/2".



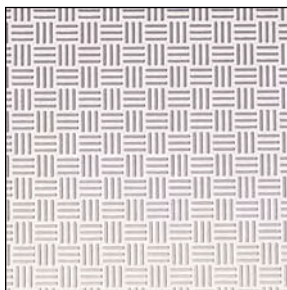
Checkerboard
B848-B Stainless steel



Basket-Weave
B848-A Stainless steel



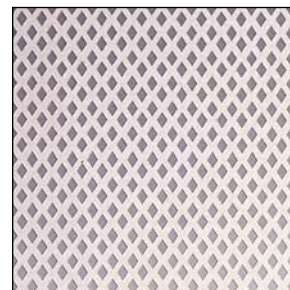
Chinese Screen
B850-D Plastic



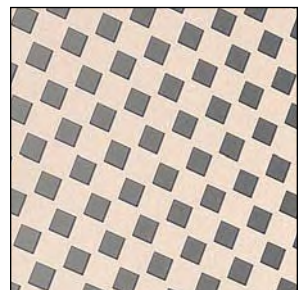
Basket Weave
B850-J Plastic



Polka Dot
B850-A Plastic



Diamonds
B850-F Plastic

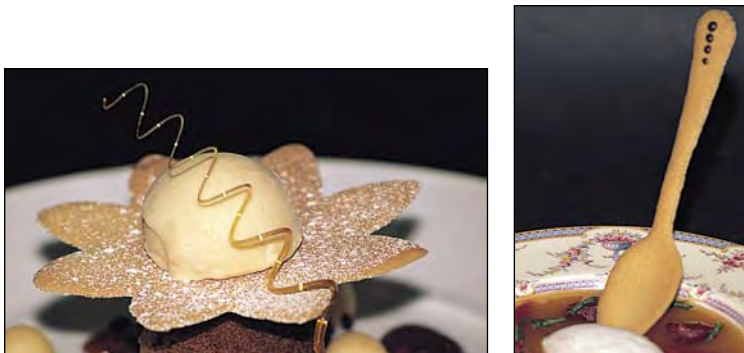
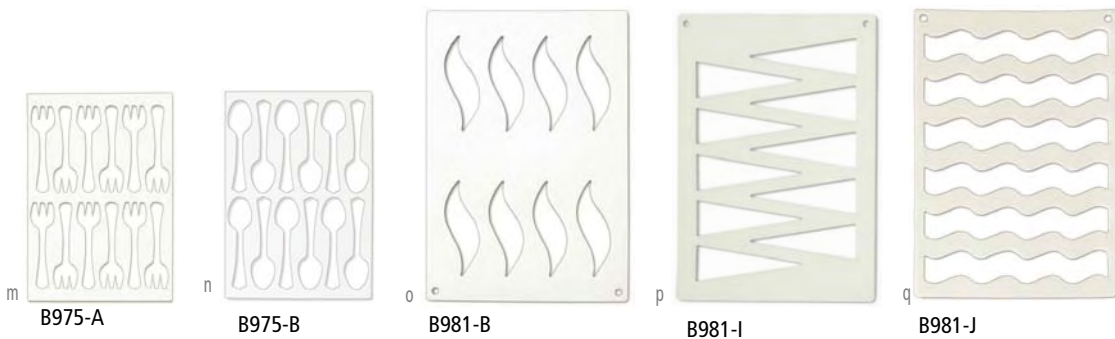
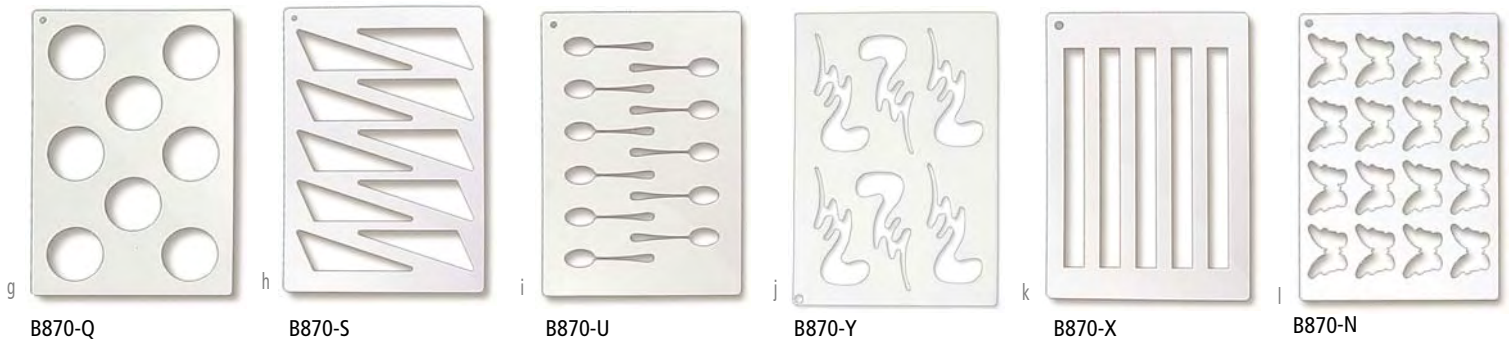
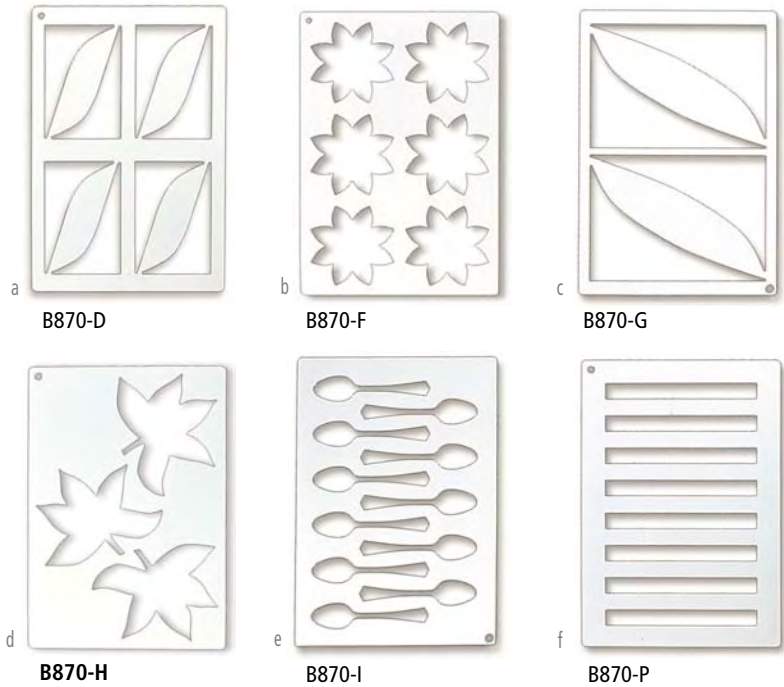


Checkerboard
B850-C Plastic

Templates

Made from food safe plastic. **Not for oven use.**

	DESCRIPTION	L	W	
a. B870-D	Small "L" Shapes	6½	3¾	15½ x 10½
b. B870-F	Petal Flowers	4½	-	15½ x 10½
c. B870-G	Large "L" Shapes	9¼	6⅝	15½ x 10½
d. B870-H	5-Point Leaves	5½	6⅝	15½ x 10½
e. B870-I	Spoons	6	1¼	15½ x 10½
f. B870-P	Strips	8	¾	15½ x 10½
g. B870-Q	Circles	3	-	15½ x 10½
h. B870-S	Triangles	5	2	15½ x 10½
i. B870-U	Spoons	4¾	1	15½ x 10½
j. B870-Y	Zig Zag	-	-	15½ x 10½
k. B870-X	Tart Bands	12	1⅙	15½ x 10½
l. B870-N	Butterflies	3	2	15½ x 10½
m. B975-A	Forks	5	1¼	11¾ x 7¾
n. B975-B	Spoons	5½	1¼	11¾ x 7¾
o. B981-B	Swoosh	5½	1¾	15½ x 10½
p. B981-I	Triangle	5½	2	15½ x 10½
q. B981-J	Wave	9½	¾	15½ x 10½



Beautiful Cake Stencils

Elegant designs in food safe plastic. 10" diameter plus tab for holding. 3 designs, each design 6¼" diameter.

B867

Flexible Palette Knives

Stainless steel blades, wood handles.

- a. **B828** Tapered offset $4\frac{3}{4}$ " x $2\frac{1}{2}$ " blade, 8" overall
- b. **B786-A** Offset, 4" blade, 8" overall
B786A-PL Same as above but with plastic handle (not shown)
- c. **B786-B** Flat, 4" blade, 8" overall

Baker's Blade

For scoring baguettes or other breads. Stainless steel blade, plastic handle and cover, 5".

- d. **B866**

e. **DEGLON Small Flexible Spatula**

4.5" blade, plastic handle.

- B991**

f. **Victorinox - Palette Knife**

4" blade, plastic handle.

- V803**

g. **DEGLON Offset Flexible Spatulas**

Extra flexible blade. Stainless steel and plastic handle.

- B906-29** $11\frac{1}{2}$ " x $1\frac{1}{2}$ " blade
- B906-24** $9\frac{1}{2}$ " x $1\frac{1}{2}$ " blade
- B906-19** $7\frac{1}{2}$ " x $1\frac{1}{2}$ " blade
- B906-15** 6" x $1\frac{1}{2}$ " blade

h. **DEGLON Extra Long Spatula**Flexible, stainless steel blade with plastic handle. $15\frac{1}{2}$ " blade (13" straight edge) $1\frac{1}{2}$ " wide. 20" overall.

- B970-40**

i. **Offset Spatula with Stiff Blade**Short, stiff blade for spreading or smoothing. Stainless steel, plastic handle. 6" blade, $1\frac{1}{4}$ " wide, 12" overall.

- B986**

j. **VICTORINOX, Flexible Offset Handle Spatulas**

Wood handles.

- V808-10** 10" long blade, tapered $1\frac{1}{4}$ " to $1\frac{1}{2}$ " wide
- V808-12** 12" long blade, tapered to $1\frac{1}{2}$ " to $1\frac{3}{4}$ " wide

k. **F. DICK Offset Spatula**Stainless steel blade, polypropylene handle. Most flexible. 10" long blade, $1\frac{3}{8}$ " wide

- D916**

l. **ATECO Offset Spatula**Stainless steel blade, plastic handle. $9\frac{3}{4}$ " long, $1\frac{1}{2}$ " wide.

- B831**

m. **VICTORINOX Flexible Spatulas**

Wood handles.

- V806-8** 8" long blade, tapered $1\frac{1}{4}$ " to $1\frac{1}{2}$ " wide
- V806-10** 10" long blade, tapered $1\frac{1}{4}$ " to $1\frac{1}{2}$ " wide
- V806-12** 12" long blade, tapered $1\frac{1}{2}$ " to $1\frac{3}{4}$ " wide



VICTORINOX Bread Knives

	BLADE	HANDLE		BLADE	HANDLE
a. V837-8	8	wood	c. V836-10	10	wood
b. V837-8PL	8	plastic	d. V836-10PL	10	plastic

VICTORINOX Serrated Knives For Cake

	BLADE	HANDLE		BLADE	HANDLE
e. V820-12	12	wood	V820-14	14	wood
f. V820-12PL	12	plastic	V820-14PL	14	plastic

g. WUSTHOF Confectioners Knife

Reverse serrations to reduce tearing. 10" blade. Plastic handle.
W484

h. Extra Long Serrated Knife

15½" stainless steel blade, wood handle. 22½" overall.
For cutting large cakes.
Z107

i. MATFER Kitchen Spoons

Reinforced fiberglass. Withstand high heat.
Dishwasher safe. Non-absorbing.

U704-12	12 long
U704-12R	Red. 12 long (not shown)
U704-15	15 long
U704-18	18 long

Spatulas and Spoonulas

j. RUBBERMAID Original, flat blade

U546-9.5	9½" long
U546-12	12" long

RUBBERMAID Heat Resistant up to 500° F. Red handle, w/ non-slip hook

k. Spoonula, cupped blade **l. Original, flat blade (notched)**

U599-9.5	9½" long	U598-9.5	9½" long
U599-13	13" long	U598-13.5	13½" long

m. Heat Resistant up to 600° F (316° C). Flat, red handle.

U835-10	Original, flat blade. 10" long
U835-14	Original, flat blade. 14" long

n. EXOGLASS Rigid Spatulas

Reinforced plastic is strong and heat resistant up to 430°F. Dishwasher safe. Can be sterilized. Flat, bevelled spatula 13¾" long.

U584

o. Flat, round end spatulas.

	L		L
U585-10	10	U585-16	16
U585-12	12	U585-18	18
U585-14	14	U585-20	20

p. Beechwood Spatula

From France.

q. Beechwood Spoon

From France.

	L		L
U811-30	12	U812-30	12
U811-40	16	U812-40	16
U811-45	18	U812-45	18





Dessicant & Indicator Cards

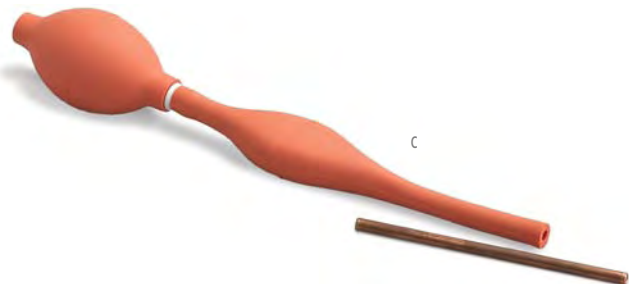
20 one third ounce packets of moisture-absorbing agent and 6 relative humidity indicator cards.

a. B695

Food Color Set

10 one ounce jars of Chefmaster gel base food colors includes: sky blue, leaf green, sunset orange, scarlet red, Christmas red, rose pink, violet, lemon yellow, nut brown, black.

b. B694



Double Bulb Sugar Pump

Has an extra bulb to regulate the supply of air to the sugar, making it easier to control the shape of the object. Comes with one copper tip.

c. B646-F



Chocolate Dipping Fork Set

6 piece set in stainless steel. Comes packed in a sturdy plastic box. 8" long.

d. B650



Chocolate Dipping Fork Set

4 piece set, stainless steel.

e. B989



Chocolate Dipping Fork Set

10 piece set. Sturdy stainless steel with wood handles. 8" long.

f. B677



Petit Four Dipping Set

4 piece set. Sturdy stainless steel with wooden handles. 8" long.

g. B677-A



Marzipan Modeling Tools

High quality plastic, very fine detail. The best professional tools for crafting marzipan animals, figures and decorations. Set of 12 tools from 4 3/4" to 5" long.

h. B610

Sugar Densimeter

Measures the density of sugar syrup. 5½" long.

a. U527-A



a

Syrup Holder

Stainless steel for use with densimeter. 1½" x 7½" high.

b. U527-B



b



c

d

Sugar Density Refractometers

Easy-to-use, professional tools measure the concentration of sugar. 5 year limited warranty from manufacturer.

c. U670 Uses 0-32 BRIX scale (for sorbets)

d. U779 Uses 0-80 BRIX scale (full range)

Low Cost Refrigerator & Freezer Thermometer

Hangs from rack. Range: -40 to 120° F, -40 to 50° C. Uses alcohol, not mercury. NSF approved.

e. U724



e



f

Compact Oven Thermometer

Hangs or stands. Easy to read, bold numbers. 200 to 500° F, 100 to 280° C. NSF approved.

f. U721

Minute and Second Timer

Built-in, last-number memory. Maximum 99 minutes, 59 seconds. Clear beeper. Magnetic clip and stand. Battery included.

g. U830



g



h

Waterproof Timer

Instrument Range: 100 minutes. Counts up and down. Last count recall. magnet mount and stand. Batteries included.

h. U849

Electronic Timer, Clock and Thermometer

Magnetic back with 3 foot stainless steel wire and probe. Range from 32° F to 392° F. Battery included.

i. U729 Cooper

j. U832 Polder



i

j



Pocket Thermometers

Stainless steel chef's pocket thermometer. Accurate adjustable reading from 0 to 220° F. 1" diameter dial, 5" long.

- a. **U504** Taylor Bi-Therm
- b. **U504-B** Comark

High Temperature Pocket Thermometer

Stainless steel housing. Range from 50 to 550° F. 1" diameter dial, 5" long.

- c. **U847**



Digital Thermometers

Wide range, precise adjustment make these excellent instruments for all purposes, including chocolate. 7" long, batteries included. NSF approved.

- d. **U651** Fine Tip, Wide range: -40 to 450° F, 40 to 232° C (Taylor)
- e. **U505-C** Standard: -58° to 300° F, -50° to 150° C (Comark)
- f. **U105** Classic: -58° to 300° F, -50° to 150° C - ON/OFF Switch (Taylor)
- g. **U845** Fine Tip, Wide range: -40 to 450° F, 40 to 232° C (CDN)



h. Metal Cage Candy Thermometer

U526 12" long, 80 to 200° centigrade only.
U526-R Replacement thermometer. Fits into metal cage.

Holder for U526 Thermometer

Attaches to pot and clasps onto thermometer. Stainless steel.

- i. **U526-H**



Long Stem Fry Thermometer - 12"

100 to 500°F. 1.75" dial, 12" stem. Durable laboratory glass lens. Stainless steel housing. Recalibratable.

- j. **U848**



Chocolate Tempering Thermometer

For chocolate tempering. Durable laboratory glass. Non-mercuric column. Protective case. 40 to 130° F. 11¼" long.

- k. **U787**

Stainless steel and plastic construction with pot clip on back.

- l. **U505-B** 12" length. 100° to 400° F, 40° to 200° C



Digital Type K Thermometer

This thermometer has a splash resistant sealed membrane keypad, making it ideal for environments where liquids are used and easy to clean up. It has a minimum/maximum feature that will provide you with the lowest and highest temperatures that have registered during the thermometer's use.

A hold function allows you to lock in a temperature reading for easier viewing and reads in both Celsius and Fahrenheit. The unit has a protective rubber sleeve that also acts as a tabletop stand. It accepts a "K" type probe that is not included.

Temperature Range: -418° to 2501° F (-250° to 1372° C)

Power Source: 4 AAA batteries (included)

Dimensions: length 5" x width 2" x depth 1"

Warranty: 3 years from manufacturer.

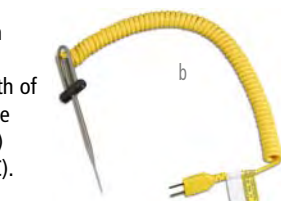
a. **U840**



b. Microneedle With Cable - Type K Connection

This type "K" thermocouple probe has a coil style cord that can extend to 48". The probe has an overall length of 3.5", with the last inch tapering down to a fine tip. The maximum temperature of the probe is 500° F (260° C) and the cord's maximum temperature is 176° F (80° C).

U789



c. Armored Cable Probe with Type K Connection*

This probe is designed for penetrating soft or semi-soft materials. Can be used with any thermocouple that accepts type "K" connection probes such as U840.

Temperature range: -418 to 700° F (-250 to 315° C)

Probe length: 4"

Cable length: 4 feet.

U842



d. Hypodermic Probe with Type K Connection*

An ultra fine probe designed for penetrating soft or semi-soft materials with minimal intrusion. Great for sous-vide applications and can be used with any thermocouple thermometer that accepts type "K" connection probes. 6 month warranty.

Type: K

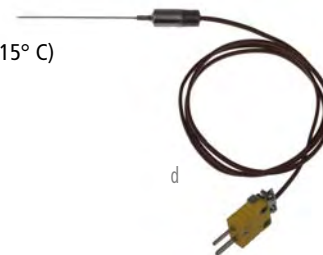
Temp range: -418 to 600° F (-250 to 315° C)

Probe length: 2.5"

Diameter: 0.035"

Cable length: 2.5 ft

U841



*Probe should not be submerged in water

Top of the line, precision instrument specifically designed for harsh conditions. Water tight. Centigrade -40° to 260° and Fahrenheit -40° to 500°. 2¼" x 6½" long. 32" connection to probe. 5 year warranty. 1 year warranty on probe.

e. **U780**

Good value. Removable probe with 20" connecting cord. Water resistant. Centigrade -40° to 260° and Fahrenheit -40° to 500°. Length 7". 5 year warranty. 1 year warranty on probe.

f. **U786**



Laser (Non-Contact) Thermometers

Infrared laser measures surface temperature at close range and at distances of many feet.

Laser Scanner

Ranges: -4° to 518° F, -20° to 270° C. 8" long. Powered by 9 volt battery (included).

Five year warranty from manufacturer. Laser (Non-Contact) Thermometers.

g. **U783-A**

COOPER Laser Scanner

Ranges -25° to 400° F, -30° to 204° C. 7½" long. Powered by 9-volt battery (not included).

1 year warranty from manufacturer.

h. **U782**

Food Safety Laser/Probe Thermometer

A non contact infrared (IR) and probe thermometer all in one unit. The IR portion has a temperature range of -30° F to 525° F (-35° C to 275° C). The probe has a temperature range of 40° F to 390° F (-40° C to 200° C). It is designed to support HACCP monitoring systems. The unit includes a canvas belt sheath and 9 volt battery. 1 year warranty from manufacturer.

i. **U902**





Chocolate Tempering Machine Commercial

A simple way to melt, temper and hold chocolate. Hot air melts chocolate and then maintains it at a proper temperature. A digital display (in Celsius only) and a thermostat offers temperature range of 20° to 60° C. The stainless steel frame is insulated for efficiency and temperature regulation. Easy to remove and clean stainless steel pan with a 26 pound (12 kg) capacity. This machine can also be fitted with stainless steel probe (item number P394-P, sold separately) for a more accurate temperature reading. Made in France. 110 volt 300 watts, Heat source: electric coil.

P394

Probe for P394 Chocolate Tempering Machine Commercial

This probe works in cooperation with chocolate tempering machine (P394). It conveniently hooks up to the machine and allows you to read the actual temperature of your melted chocolate in the digital display rather than the machines set air temperature.

P394-P



Table Top Chocolate Temperer

Thermostat controlled heat unit melts up to 8 lbs of chocolate. Cooling fan, one stainless steel bowl and plastic scraper included. Dimensions: 12½" high x 14¼" wide. 110 volts.

P110

P110-B Extra Bowl Stainless steel.

P110-S Extra Scraper Plastic.



AIRMASTER Air Brush

This classic air brush is lightweight, dependable, quiet and easy to use. The airbrush is 5½" long and made of nickel plated brass. The compressor operates on 110 volt with adjustable air pressure.

P237



Chocolate Sprayer

Turbine powered system for high air volume and low pressure. The result is a finer spray with less overspray. The nozzle on the hand gun has adjustable pattern size (¼" to 6"), 3 different shapes, and adjustable air control. Great for showpiece and production work. 115 volt, 10 amp, 15 foot hose.

P240

P240-A Extra Spray Can

Confectionery Cutters - "Guitars"

Precision-made stainless steel apparatus cuts squares, rectangles, triangles and diamond shapes in ganache, marzipan, nougat, caramel, jellies, chocolate fillings, pastries, petit fours etc. Strong platform and frames guarantee clean, precise cuts. Indispensable to confectionery production.

7.5 mm Guitar

Includes: platform (15" x 15") with 7.5mm spacing; three interchangeable cutting frames: 15, 22.5, 30mm wide; one stainless steel tray, one extra roll of wire, appropriate allen keys, screws, tools.

B700

also available:

B700-7.5 7.5mm cutting frame

B700-37.5 37.5mm cutting frame

5 mm Guitar

Same style as above except for size of spacing. Included in cutter set: platform (15" x 15") with 5mm spacing; four interchangeable cutting frames: 10, 15, 20, 25mm wide; one stainless steel tray. One extra roll of wire, appropriate allen keys, screws, tools.

B701

Also available:

B701-5 5mm cutting frame

B701-30 30mm cutting frame



Confectionery Rules (sold individually)

Chromed steel rods, $\frac{3}{8}$ " x $\frac{3}{8}$ ".

B951-9.5 9½" long

B951-15 15" long

B951-22 22" long



Sugar Lamp

Specially built 24" neck on weighted base. Neck is extra firm. Will not sag. Includes infra-red (heat) bulb.

B693



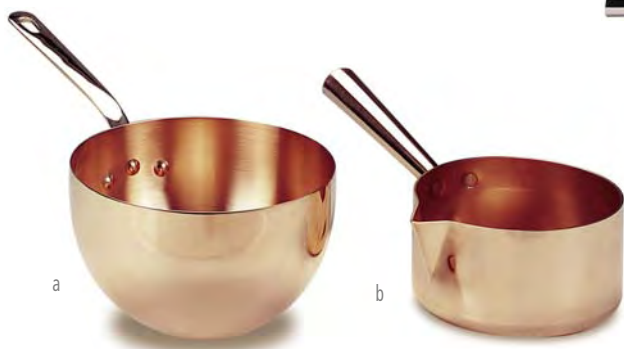
Confectionery Ruler Set

Chromed steel rods, $\frac{3}{8}$ " x $\frac{3}{8}$ ".

4 piece set consist of:

2 pieces 31", 2 pieces 20".

B682



a

b

a. Zabaglione Bowl

Thick gauge copper with brass handle, 8" diameter.

U509

b. Copper Sugar Pots

Heavy copper sugar boiling pots. Made in France.

U528-12 5" diameter, 24 oz

U528-16 6.25" diameter, 50 oz

U528-20 8" diameter, 3 qts



Aluminum Rolling Pins

Heavy duty with special bearing for smooth operation. Aluminum handle.

- B887-15** 15" long roller x 3½" diameter.
- B887-18** 18" long roller x 3½" diameter.



Hardwood Rolling Pins with handles

Finest quality, full length steel rod & bearings.

- B638-A** 15" x 3½" (25" overall)
- B638-B** 18" x 3½" (28" overall)



French Hardwood Rolling Pin

B640 19¼" x 1¼"

Tapered Rolling Pin

B641 21"



Hardwood Rolling Pin

B639 20" x 2"

Thin Hardwood Rolling Pin

B886 18" x 1¼"

Croissant Cutters

Best quality professional cutters. Stainless steel blades, large handles, heavy duty steel rods for continuous production.

- a. **B624** Cuts 3½" x 8" triangles (classic French size) and makes slit at wide end for easy shaping
- b. **B624-B** Cuts 4½" x 6" triangles for small croissants
- c. **B624-E** Cuts 3 triangles simultaneously, each measuring 5½" x 6¼"
- d. **B624-C** Cuts 5½" x 6¼" triangles



Roller Dockers

- e. **B716** Heavy duty plastic, 4" roller.
- f. **B967** Plastic and stainless steel. Sharp points. 5" wide track.

Aluminum points, metal frame and wood handle.

- g. **B676-A** 4" wide roller



Adjustable Spreading Tools (Raplettes)

Ideal for smoothing and levelling dough or chocolate.
Heavy stainless steel construction.

Straight Edge Raplette

Adjusts from 2" to 16" wide. Spreads from 1/2" up to 1/2" thick.

B910

Comb Edge Raplette

2 reversible grooved edges (fine & medium).
Adjusts from 2" to 15" wide. Spreads from 1/2" up to 1/2" thick.

B909



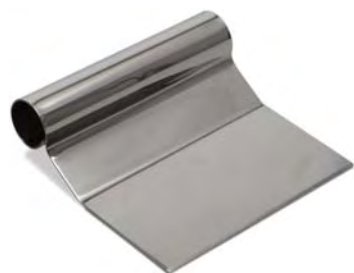
Basketweave Rolling Pins

Molded plastic surface gives flatter design. Rolling pin is easier to use and clean.

B820 2 1/2" diameter x 10" long.

Plastic discs are individually mounted on pin for very clear definition.

B645 1 1/2" diameter x 8 1/2" long.



Offset Chocolate Scraper

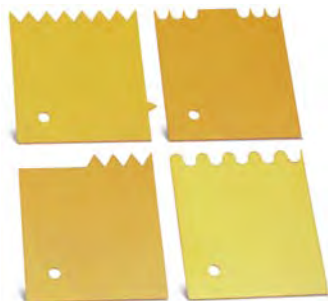
Stainless steel.

B996 4 3/4" w x 3 3/4" L

Cake Decorating Combs

Set of 4 in easy-to-see orange plastic.

B647



Wood Grain Tool

For making wood grain designs on chocolate.
Perfect for "Buche de Noel" and other cakes.
Made of food-safe rubber.

B905-10 4" long

B905-15 6" long



Plastic Chocolate Comb

8.5" Long.

B871



Chocolate Spatula

For spreading or smoothing melted chocolate. Great for wiping chocolate molds. Also for making curls. Stainless steel, semi-flexible blade. 7" across. Plastic frame and handle.

B950



Sugar Basket Forms

Smooth hardwood blocks 1" thick with pre-drilled holes for 7" brass rods.

Ovals

B955 Two ovals (5 1/2" x 8" and 4" x 7 1/4") with 24 brass rods.

Circles

B956 Two circles (4" and 6" diameter) with 21 brass rods.

**a. Powdered Sugar Sieve**

Strong plastic frame (polycarbonate/polystyrene) with thin, stainless steel wire (0.2mm). Mesh openings are only 0.5mm. 7½" diameter, 4¼" high.

U640**b. Fine Mesh Flour Sieve**

Strong polycarbonate plastic frame with thin, stainless steel wire (0.24mm). 12" diameter, 4½" high

U641**c. Replaceable Mesh Flour Sieve**

Lightweight but very strong two-piece plastic sieve. Comes with superfine (#24) mesh. 20" wide x 4.5" tall.

U818**U818-SF** Replacement bottom & superfine mesh (#24-0.80 mm)**U818-F** Replacement bottom & fine mesh (#18-1.25 mm)**U818-M** Replacement bottom & medium mesh (#12-1.60 mm)**d. Large All-Purpose Sieve**

Frame constructed from dent-resistant aluminum. Screen is tinned steel mesh. 14 mesh, 16" diameter, 3½" high.

U500**U500S-14** Medium replacement screen**U500S-18** Fine replacement screen**U500S-22** Extra fine replacement screen**e. Sieve**

12" diameter stainless steel flour sieve. #20 mesh not replaceable. Made in Asia.

U100**f. Deluxe Baker's Scale**

Stainless steel platters and balance mechanism. Epoxy coated, metal base. Rubber foot pads. Plastic scoop. Capacity: 16 pounds by ¼ oz. Four weights: 1 pound, 2 pounds, 4 pounds, & 8 pounds. Dimensions: 19¼" x 7½" x 9". Made in USA.

U802

Extra plastic scoop.

U802-ScoopFor other scales, see [Utensils section on page 70](#).**Cake Saws**

3 stainless steel blades 15½" long. Chrome steel frame 19" overall

g. B785**B785-BL** Replacement blades

Enamelled steel frame with 2 carbon steel adjustable blades.

Blades are 16½" long. Frame is 19" overall.

h. B784**i. Revolving Cake Decorating Stand**

½" thick aluminum alloy top on heavy white enamelled cast iron base. Precision machined pivot and bearing for smooth rotation.

12" diameter, 5" high

B605

Magnetic 2-Piece Chocolate Molds

Two pieces (bottom & sides) are held tight by magnets. Pull them apart and line the bottom with a transfer sheet. Put back together and fill like any other chocolate mold. Each mold measures 5 1/4" x 10 3/4" x 3/8" high. Chocolates come out approximately 1/2" high. Made in Italy of food safe rigid plastic.



	NAME	SIZE OF FORMS (MM)	# OF FORMS
K851	Oval	30 x 20	28
K852	Round	25	28
K853	Square	25	28
K854	Tear Drop	30 x 22	28
K855	Frame	35 x 30	15
K856	Fluted Round	35	15
K857	Small Heart	33 x 33	15



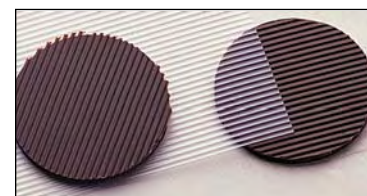
Textured Chocolate Decorating Sheets

Clear, flexible plastic with raised designs. Create beautiful, 3-dimensional look to chocolates, strips, cakes, and presentation pieces. Each sheet 10" x 16". Sold in packs of 5.

- B974-A Crocodile
- B974-C Lines
- B974-F Basketweave
- B974-E Checkerboard



B974-A



B974-C



B974-E



B974-F

Professional Quality Chocolate Molds

Made in Europe of food safe, clear, rigid polycarbonate. Very detailed and extremely well made. Molds are 11" x 7".



	NAME	SIZE OF FORMS (MM)	# OF FORMS
K549	Pinstride Cube	22.5 x 22.5	24
K545	Twisted Cylinder	25 Ø x 20	54
K546	Lined cube	20 x 20	54



	NAME	SIZE OF FORMS (MM)	# OF FORMS
K540	4 Section Bar	115 x 32.5	8
K541	5 Section Bar	110 x 40	8



	NAME	SIZE OF FORMS (MM)	# OF FORMS
K542	Rectangular Tablet	22 x 15 x 8	16
K909	Tear Drop	30 x 40	24
K544	Coffee Bean	10 x 15	108



	NAME	SIZE OF FORMS (MM)	# OF FORMS
K312	Medium Hearts	25 x 30 x 14	28
K554	Round Swirl	29 x 18	24
K555	Gothic Triangle	33 x 33 x 15	24



	NAME	SIZE OF FORMS (MM)	# OF FORMS
K556	Wave Rectangle	33 x 25 x 12	24
K557	Crest	30 x 23 x 18	24
K558	Tiered Square	30 x 30 x 12	24



	NAME	SIZE OF FORMS (MM)	# OF FORMS
K559	Split Oval	35 x 27 x 12	20
K560	Twisted Log	38 x 25 x 12	20
K561	Split Rectangle	30 x 24 x 12	24



	NAME	SIZE OF FORMS (MM)	# OF FORMS
K562	Indented Slope	30 x 20	24
K574	Square Pages	29 x 29 x 12	18
K575	Twin Peaks	30 x 25 x 15	24



	NAME	SIZE OF FORMS (MM)	# OF FORMS
K550	Cylinder	20 diam.	36
K547	Peaked Mound	25 x 30	36
K548	Mini Square	15 x 15	108



	NAME	SIZE OF FORMS (MM)	# OF FORMS
K551	Grooved Rectangle	20 x 30	36
K552	Oval Grooved Top	20 x 30	32
K553	Timbale	32.5 diam.	18



	NAME	SIZE OF FORMS (MM)	# OF FORMS
K300	Rose Design	34 x 30 x 20	24
K528	Large Hearts	30 x 35	18



	NAME	SIZE OF FORMS (MM)	# OF FORMS
K206	Ridged Dome	30 x 18	40
K207	Square	26 x 26 x 15	36
K209	Diamond	37 x 26 x 13	28



	NAME	SIZE OF FORMS (MM)	# OF FORMS
K203	Leaf Oval	39 x 24 x 15	32
K535	Striped Square	28 x 14	28
K518	French Oval	20 x 43	32



	NAME	SIZE OF FORMS (MM)	# OF FORMS
K515	Madeleine	30 x 36	32
K516	Fleur de Lys	30 x 35	28
K517	Coffee Cup	25 x 33	32



	NAME	SIZE OF FORMS (MM)	# OF FORMS
K500	Fluted Round	36 x 18	24
K501	Dot Bar	35 x 25 x 18	28
K503	Pineapple	35 x 25 x 20	24



	NAME	SIZE OF FORMS (MM)	# OF FORMS
K513	Ridged Pyramid	40 x 40 x 40	18
K514	Tilted Cone	35 x 40	24
K506	Gift Box	30 x 30 x 20	24



	NAME	SIZE OF FORMS (MM)	# OF FORMS
K576	Notched Rectangle	26 x 20 x 21	28
K577	Notched Cylinder	24 x 21	28
K578	Notched Dome	28 x 19	28



	NAME	SIZE OF FORMS (MM)	# OF FORMS
K579	Slot	26 x 19 x 16	28
K580	Half Pipe	27 x 23 x 14	28
K581	Step	26 x 19 x 16	28



	NAME	SIZE OF FORMS (MM)	# OF FORMS
K305	Dome	30 x 20	32
K306	Log	35 x 18 x 16	44
K307	Cherry	30 x 22	32



	NAME	SIZE OF FORMS (MM)	# OF FORMS
K310	Pyramid	26 x 26 x 22	32
K311	Leaf	30 x 29 x 18	24
K308	Oval Swirl	33 x 26 x 20	32



	NAME	SIZE OF FORMS (MM)	# OF FORMS
K507	Cherry Swirl	30 x 25	28
K504	Victorian	43 x 25 x 25	24
K509	Fleur Diamond	45 x 30 x 25	24



	NAME	SIZE OF FORMS (MM)	# OF FORMS
K317	Elegance	35 x 25	32
K200	Kugelhopf	30 x 18	35
K202	Bud Bar	32 x 17 x 17	36



	NAME	SIZE OF FORMS (MM)	# OF FORMS
K520	Hexagonal	35 x 40	20
K521	Oblong	13 x 45	36
K522	Triangle Log	22 x 30	28



	NAME	SIZE OF FORMS (MM)	# OF FORMS
K301	Fluted Oval	37 x 23 x 15	36
K536	Interlocking	10 x 10 x 5	28
K303	Turban	28 x 21	40



	NAME	SIZE OF FORMS (MM)	# OF FORMS
K582	Twist	28 x 20 x 17	28
K901	Medium Demisphere	40	15



	NAME	SIZE OF FORMS (MM)	# OF FORMS
K584	Twist Bar	112 x 33 x 16	8
K585	Notched Rectangle	119 x 29 x 10	8



	NAME	SIZE OF FORMS (MM)	# OF FORMS
K215	Small Demisphere	30	44
K214	Plain Square	24 x 24 x 15	40
K216	Bordelais	24 x 20	40



	NAME	SIZE OF FORMS (MM)	# OF FORMS
K573	Ornament	34 x 25 x 15	30
K505	Fluted Oval	48 x 28 x 14	24
K563	Indented Rectangle	30 x 18 x 15	30



	NAME	SIZE OF FORMS (MM)	# OF FORMS
K564	Bridge	31 x 20 x 16	30
K566	Trunk	30 x 18 x 15	30
K565	Shark's Tooth	35 x 20 x 15	30



	NAME	SIZE OF FORMS (MM)	# OF FORMS
K567	Abstract	30 x 18 x 15	30
K568	Terrain	30 x 18 x 15	30
K569	Thumbprint	32 x 19 x 15	30



	NAME	SIZE OF FORMS (MM)	# OF FORMS
K570	Volcano	32 x 22 x 15	30
K571	Drop	30 x 30 x 15	30
K572	Cats Eye	32 x 24 x 15	30



6 Assorted Shapes
43mm x 25mm x 25mm. 24 forms.
K314



	NAME	SIZE OF FORMS (MM)	# OF FORMS
K113	Large Coffee Bean	22 x 15 x 8	78
K114	Mini Hearts	22 x 21 x 8	60
K115	Small Bar	24 x 16 x 11	56



	NAME	SIZE OF FORMS (MM)	# OF FORMS
K21	Bar	31 x 21 x 11	36
K212	Geodesic Dome	30 x 20	40
K110	Leaf 1	60 x 40 x 5	15

p



Chocolate Alphabet Mold

Makes all 26 letters each. 1 1/2" high x 1/4" deep. Mold measures 5 1/4" x 10 3/4".

K906



Chocolate Bar Mold

Makes five bars (each 5" long x 1 1/2" wide x 5/8" deep) with checkerboard design on top. Mold measures 5 1/4" x 10 3/4". Made from food safe, rigid plastic.

K907



2- Piece Magnetic Truffle Molds

Two pieces (bottom & top) are held together by magnets. Pour chocolate into holes on top and let set. Put filling in with pastry bag and tube. Then seal. When ready, separate top & bottom pieces. Each mold is 11" x 7". Filling holes are 3/8" across. Made in Italy of food safe, rigid plastic.

K859 Round textured. 1" diameter.

K858 Round smooth. 1" diameter.



Chocolate Cup Molds

Made from food safe, rigid plastic.

K908 Makes three coffee cups of 2 3/4" diameter x 1 3/8" deep. Mold measures 5 1/4" x 10 3/4".

K543 Makes twelve coffee cups of 2" diameter x 1 1/4" deep. Mold measures 6 7/8" x 10 1/4".



Spoon-Shape Chocolate Mold

10 spoon shapes, each 4.5" long.

K531



Assortment

4 each of 6 designs: fluted round, triangle, heart, snail, walnut & shell. 1 1/4" approximate diameter of each cavity. 24 cavities total.

K511



Rabbit With Basket
2 piece mold (front and back).
Produces 13½" figure.
K830



Egg Molds
Each mold produces half eggs.

	EGG SIZE	FORMS
K800	2½	12
K801	4	8
K802	6	3
K803	8	2
K804	12	1
K805	16	1
K806	25	1
K807	30	1



Rabbit with Backpack
2 piece mold (right & left sides)
produces 1 rabbit 9" tall.
K820



Standing Rabbit
1 Piece mold, 7¾" tall. Produces 2 halves.
K835



Classic Sitting Rabbit- large
2 piece mold (front & back) produces
one figure 9" tall, 5" wide.
K833



Classic Sitting Rabbit- Medium
One-piece mold (left & right sides) produces one figure 7" x 5¾" wide.
K834



Big Eared Rabbit
2 piece mold (front & back) produces 6 rabbits 5" tall.
K832

Whipped Cream Makers and Soda Siphon

Whippers are perfect for making "foamed" desserts, appetizers, sauces and purees. The soda siphon will carbonate your beverages.



b

a. THERMO WHIP PLUS from ISI of Austria

Stainless steel cannister and dispenser. Will not rust. Three different nozzles included. Maintains cool temperatures for hours or retains warm temperatures for fresh short-term consumption. Double-walled vacuum insulation protects hands from temperature extremes. 1 pint size. 14" high. **Great for hot and cold foods.**

B934



a

b. GOURMET WHIP PLUS from ISI of Austria

Stainless steel cannister, aluminum dispenser. Will not rust. Three different nozzles. Special heat resistant, silicone gasket. **Can be used with hot foods.**

B100 ½ pint size. 8" high

B938 1 pint size. 12" high

B939 1 quart size. 14" high



PROFI from ISI of Austria

Stainless steel cannister, aluminum dispenser. Will not rust. Three different nozzles included. For cold or warm foods. **Not suitable for hot foods.**

B935 1 pint size. 12" high

B936 1 quart size. 14" high

Stainless Steel Injector Needles

Use with the iSi Thermo Whip or iSi Gourmet Whip. Made of 100% 18/10 stainless steel.

B945



Gas Chargers



Cream Chargers

B937-10 Box of 10

B937-24 Box of 24

B937-50 Box of 50



Soda Chargers

B993-10 Box of 10

Use with B992



Classic Soda Siphon

Brushed aluminum cannister. Features a removable measuring tube for easy cleaning and to prevent overfilling. Secure neck threading and a pressure-regulating system provide maximum safety. 1 quart size. **B992**